



**HAVELLS**

## Experience the Latest & Safest in Building Circuit Protection



**LIST PRICE**  
w.e.f. 1<sup>st</sup> July, 2017 rev.1



## ◆ Distribution Boards

- Common Base & Separate Door Concept ..... 04  
for DCORA/Metalica/QVE Plus
- DBoxx Distribution Boards..... 06
- Metalica Distribution Boards ..... 06
- Distribution Board with Lock..... 06
- Phase Selector Distribution Boards..... 06
- Utility Distribution Boards..... 08
- Special Application Distribution Boards..... 09

## Introducing QVE Plus Distribution Boards AFTER ALL, A PROTECTOR NEEDS TO BE TOUGH.

### Features

- Robust core with smooth curve semantic
- Innovative textured finish with optimized play of matte and gloss
- Multiple premium colour finishes



## Common Base & Separate Door Concept

### Distribution Board Base



#### Distribution Board Base Suitable for QVE Plus Door

HSN Code - 8537

No. of Ways	DB Base for SPN Door Cat. No.	List Price ₹	DB Base for TPN Door Cat. No.	List Price ₹
4	DSSDBX0245	620/-	DSSDBX0254	1,540/-
6	DSSDBX0246	745/-	DSSDBX0255	1,790/-
8	DSSDBX0247	870/-	DSSDBX0256	2,295/-
12	DSSDBX0248	1,045/-	DSSDBX0257	3,260/-
16	DSSDBX0249	1,330/-	-	-

### QVE Plus DB Door



#### SPN QVE Plus Distribution Board Door

HSN Code - 8538

No. of Ways	Mineral Grey SPN Door Cat. No.	List Price ₹	Perdo Ivory SPN Door Cat. No.	List Price ₹	Super White SPN Door Cat. No.	List Price ₹
4	DSSDBX0268	460/-	DSSDBX0277	460/-	DSSDBX0299	460/-
6	DSSDBX0269	510/-	DSSDBX0278	510/-	DSSDBX0300	510/-
8	DSSDBX0270	520/-	DSSDBX0279	520/-	DSSDBX0301	520/-
12	DSSDBX0271	650/-	DSSDBX0280	650/-	DSSDBX0302	650/-
16	DSSDBX0272	920/-	DSSDBX0281	920/-	DSSDBX0303	920/-



#### TPN QVE Plus Distribution Board Door

Suitable for MCB / RCCB / Isolator as incomer

HSN Code - 8538

No. of Ways	Mineral Grey SPN Door Cat. No.	List Price ₹	Perdo Ivory SPN Door Cat. No.	List Price ₹	Super White SPN Door Cat. No.	List Price ₹
4	DSSDBX0273	1,135/-	DSSDBX0282	1,135/-	DSSDBX0304	1,135/-
6	DSSDBX0274	1,540/-	DSSDBX0283	1,540/-	DSSDBX0305	1,540/-
8	DSSDBX0275	1,985/-	DSSDBX0284	1,985/-	DSSDBX0306	1,985/-
12	DSSDBX0276	3,065/-	DSSDBX0285	3,065/-	DSSDBX0307	3,065/-

### Distribution Board Base



#### Common Distribution Board Base Suitable for DCORA / Metalica / QVE Door

HSN Code - 8537

No. of Ways	SPN Cat. No.	List Price ₹	TPN Cat. No.	List Price ₹
4	DSSDBX0240	745/-	DSSDBX0250	1,850/-
6	DSSDBX0241	895/-	DSSDBX0251	2,145/-
8	DSSDBX0242	1,045/-	DSSDBX0252	2,755/-
12	DSSDBX0243	1,255/-	DSSDBX0253	3,910/-
16	DSSDBX0244	1,595/-	-	-

## DCORA

## SPN DCORA Distribution Board Door

HSN Code - 8538



No. of Ways	Class Leather SPN Cat. No.	List Price ₹	Pearl Stone SPN Cat. No.	List Price ₹	Sepia Rosewood SPN Cat. No.	List Price ₹
4	DSSDBX0159	1,045/-	DSSDBX0164	1,045/-	DSSDBX0169	995/-
6	DSSDBX0160	1,125/-	DSSDBX0165	1,125/-	DSSDBX0170	1,080/-
8	DSSDBX0161	1,165/-	DSSDBX0166	1,165/-	DSSDBX0171	1,145/-
12	DSSDBX0162	1,460/-	DSSDBX0167	1,460/-	DSSDBX0172	1,420/-
16	DSSDBX0163	1,945/-	DSSDBX0168	1,945/-	DSSDBX0173	1,905/-



## TPN DCORA Distribution Board Door

(for Single Phase Outgoing) suitable for MCB / RCCB / Isolator as incomer

HSN Code - 8538

No. of Ways	Class Leather TPN Cat. No.	List Price ₹	Pearl Stone TPN Cat. No.	List Price ₹	Sepia Rosewood TPN Cat. No.	List Price ₹
4	DSSDBX0204	2,465/-	DSSDBX0208	2,465/-	DSSDBX0212	2,335/-
6	DSSDBX0205	3,125/-	DSSDBX0209	3,125/-	DSSDBX0213	2,995/-
8	DSSDBX0206	4,250/-	DSSDBX0210	4,250/-	DSSDBX0214	4,035/-
12	DSSDBX0207	6,070/-	DSSDBX0211	6,070/-	DSSDBX0215	6,050/-

## METALICA

## SPN Metalica Distribution Board Door

HSN Code - 8538



No. of Ways	Sparkling White SPN Cat. No.	Sparkling Gold SPN Cat. No.	Silverish Grey SPN Cat. No.	List Price ₹
4	DSSDBX0179	DSSDBX0189	DSSDBX0184	740/-
6	DSSDBX0180	DSSDBX0190	DSSDBX0185	780/-
8	DSSDBX0181	DSSDBX0191	DSSDBX0186	865/-
12	DSSDBX0182	DSSDBX0192	DSSDBX0187	1,055/-
16	DSSDBX0183	DSSDBX0193	DSSDBX0188	1,415/-



## TPN Metalica Distribution Board Door

(for Single Phase Outgoing) suitable for MCB / RCCB / Isolator as incomer

HSN Code - 8538

No. of Ways	Sparkling White TPN Cat. No.	Sparkling Gold TPN Cat. No.	Silverish Grey TPN Cat. No.	List Price ₹
4	DSSDBX0220	DSSDBX0228	DSSDBX0224	1,920/-
6	DSSDBX0221	DSSDBX0229	DSSDBX0225	2,590/-
8	DSSDBX0222	DSSDBX0230	DSSDBX0226	3,430/-
12	DSSDBX0223	DSSDBX0231	DSSDBX0227	5,210/-

## QVE

## SPN QVE Distribution Board Door

HSN Code - 8538



No. of Ways	Regal Grey	Pearl Ivory	List Price ₹
4	DSSDBX0194	DSSDBX0199	550/-
6	DSSDBX0195	DSSDBX0200	610/-
8	DSSDBX0196	DSSDBX0201	625/-
12	DSSDBX0197	DSSDBX0202	780/-
16	DSSDBX0198	DSSDBX0203	1,105/-



## TPN QVE Distribution Board Door

(for Single Phase Outgoing) suitable for MCB / RCCB / Isolator as incomer

HSN Code - 8538

No. of Ways	Regal Grey	Pearl Ivory	List Price ₹
4	DSSDBX0232	DSSDBX0236	1,360/-
6	DSSDBX0233	DSSDBX0237	1,850/-
8	DSSDBX0234	DSSDBX0238	2,380/-
12	DSSDBX0235	DSSDBX0239	3,675/-

## DBoxx DB



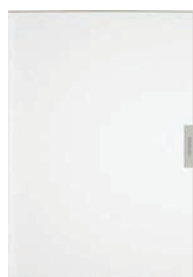
## DBoxx SPN &amp; TPN

The New Style Statement for your DBs

HSN Code - 8537

No. of Ways	Mist White SPN Cat. No.	Coin Grey SPN Cat. No.	List Price ₹	No. of Ways	Mist White TPN Cat. No.	Coin Grey TPN Cat. No.	List Price ₹
8	DHDNSHCOW08	DHDNSHCDDW08	1,650/-	6	DHDNTHCOW06	DHDNTHCDDW06	4,300/-
12	DHDNSHCOW12	DHDNSHCDDW12	1,950/-	8	DHDNTHCOW08	DHDNTHCDDW08	5,400/-
16	DHDNSHCOW16	DHDNSHCDDW16	2,650/-	12	DHDNTHCOW12	DHDNTHCDDW12	7,850/-

## Metalica DB



## SPN Metalica Distribution Board

HSN Code - 8537

No. of Ways	Sparkling White SPN Cat. No.	Sparkling Gold SPN Cat. No.	Silverish Grey SPN Cat. No.	List Price ₹
4	DHDNSHODAW04	DHDNSHODGW04	DHDNSHODDW04	1,480/-
6	DHDNSHODAW06	DHDNSHODGW06	DHDNSHODDW06	1,675/-
8	DHDNSHODAW08	DHDNSHODGW08	DHDNSHODDW08	1,910/-
12	DHDNSHODAW12	DHDNSHODGW12	DHDNSHODDW12	2,310/-
16	DHDNSHODAW16	DHDNSHODGW16	DHDNSHODDW16	3,010/-

## TPN Metalica Distribution Board

HSN Code - 8537

No. of Ways	Sparkling White TPN Cat. No.	Sparkling Gold TPN Cat. No.	Silverish Grey TPN Cat. No.	List Price ₹
4	DHDNTHODAW04	DHDNTHODGW04	DHDNTHODDW04	3,735/-
6	DHDNTHODAW06	DHDNTHODGW06	DHDNTHODDW06	4,690/-
8	DHDNTHODAW08	DHDNTHODGW08	DHDNTHODDW08	6,125/-
12	DHDNTHODAW12	DHDNTHODGW12	DHDNTHODDW12	9,040/-

## Distribution Boards with Lock



## Distribution Board With Lock

HSN Code - 8537

No. of Ways	DD DB With Lock SPN Cat. No.	List Price ₹	No. of Ways	DD DB With Lock TPN Cat. No.	List Price ₹
8	DHDMSHODCW08	1,670/-	4	DHDMSHODCW04	3,210/-
12	DHDMSHODCW12	2,030/-	6	DHDMSHODCW06	3,995/-
-	-	-	8	DHDMSHODCW08	5,140/-

## Phase Selector



## Phase Selector (Horizontal - 4 Quadrant)

(with rotary switches, duly wired)

HSN Code - 8537

No. of Ways	Rating	Regal Grey Cat. No. (DD)	I/C	List Price ₹
4	40A	DHDSCHDRZ04040	Eight way	7,760/-
4	63A	DHDSCHDRZ04063	Eight way	10,395/-
6	40A	DHDSCHDRZ06040	Eight way	8,600/-
6	63A	DHDSCHDRZ06063	Eight way	10,750/-
8	40A	DHDSCHDRZ08040	Eight way	9,080/-
8	63A	DHDSCHDRZ08063	Eight way	11,705/-



## Phase Selector (Vertical)

(with rotary switches, duly wired &amp; provision for 8W I/C)

HSN Code - 8537

No. of Ways	Rating	Regal Grey Cat. No. (DD)	Pearl Ivory Cat. No. (DD)	List Price ₹
4	40A	DHDSNVDRZ04040	DHDSNVDPZ04040	9,915/-
4	63A	DHDSNVDRZ04063	DHDSNVDPZ04063	11,705/-
6	40A	DHDSNVDRZ06040	DHDSNVDPZ06040	10,035/-
6	63A	DHDSNVDRZ06063	DHDSNVDPZ06063	11,825/-
8	40A	DHDSNVDRZ08040	DHDSNVDPZ08040	11,105/-
8	63A	DHDSNVDRZ08063	DHDSNVDPZ08063	12,420/-



Automatic Phase Selector DB

HSN Code - 8537

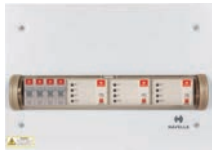
No. of Ways	Cat. No.	Description	List Price ₹
4	DHDANVDRZ04032	Auto Ph-Sel DB 4W D/D 32A	12,770/-
6	DHDANVDRZ06032	Auto Ph-Sel DB 6W D/D 32A	15,420/-



Phase Selector Enclosure (Vertical)  
(with rotary switches, duly wired)

HSN Code - 8537

Rating	Regal Grey Cat. No.	List Price ₹
40A	DHDATVFS40	3,820/-
63A	DHDATVFS63	5,550/-



Automatic Phase Selector Unit

HSN Code - 8537

Rating* **	Cat. No.	List Price ₹
32A*	DHDAMHSCZ00032	11,680/-

Note: Supplied with 63 A, 4 P MCB as incomer.

\* Changeover Capacity Per Phase

\*\* 63A Current Carrying Capacity Per Phase

QVE Series DB



SP&N

HSN Code - 8537

No. of Ways	O/G	Regal Grey Cat. No. (SD)	List Price ₹	Regal Grey Cat. No. (DD)	Pearl Ivory Cat. No. (DD)	List Price ₹
4	4	DHDPSHOSRW04	835/-	DHDPSHODRW04	DHDPSHODPW04	1,295/-
6	6	DHDPSHOSRW06	925/-	DHDQSHODRW06	DHDQSHODPW06	1,505/-
8	8	DHDPSHOSRW08	1,000/-	DHDPSHODRW08	DHDPSHODPW08	1,670/-
12	12	DHDPSHOSRW12	1,355/-	DHDPSHODRW12	DHDPSHODPW12	2,030/-
16	16	DHDPSHOSRW16	1,675/-	DHDPSHODRW16	DHDPSHODPW16	2,700/-



T&PN

(for Single Phase Outgoing) suitable for MCB / RCCB / Isolator as incomer

HSN Code - 8537

No. of Ways	I/C+O/G	Regal Grey Cat. No. (SD)	List Price ₹	Regal Grey Cat. No. (DD)	Pearl Ivory Cat. No. (DD)	List Price ₹
4	4+12	DHDQTHCSRW04	2,415/-	DHDNTHCDRW04	DHDNTHCDPW04	3,210/-
6	8+18	DHDQTHCSRW06	2,935/-	DHDNTHCDRW06	DHDNTHCDPW06	3,995/-
8	8+24	DHDQTHCSRW08	3,380/-	DHDNTHCDRW08	DHDNTHCDPW08	5,140/-
12	8+36	DHDQTHCSRW12	4,395/-	DHDNTHCDRW12	DHDNTHCDPW12	7,590/-



T&PN

(for Single Phase Outgoing) suitable for TPN RCBO as incomer

HSN Code - 8537

No. of Ways	I/C+O/G	Regal Grey Cat. No. (SD)	List Price ₹	Regal Grey Cat. No. (DD)	Pearl Ivory Cat. No. (DD)	List Price ₹
4	4+12	DHDPTHOSRW04	2,540/-	DHDPTHODRW04	DHDPTHODPW04	3,380/-
6	8+18	DHDPTHOSRW06	3,085/-	DHDPTHODRW06	DHDPTHODPW06	4,210/-
8	8+24	DHDPTHOSRW08	3,555/-	DHDPTHODRW08	DHDPTHODPW08	5,410/-
12	8+36	DHDPTHOSRW12	4,630/-	DHDPTHODRW12	DHDPTHODPW12	7,980/-

## Consumer Units



## Single Door with Acrylic Window

Sheet Steel, Phosphatised, Powder Painted MCB DBs with Bus Bar, Neutral Link, Earth Bar and Din Rail (In accordance with IS 13032, IS 8623, IEC/BSEN 60439-3)

HSN Code - 8537

No. of Ways	Regal Grey Cat. No.	List Price ₹
4	DHDMSHOSRA04	1,035/-
8	DHDMSHOSRA08	1,280/-
12	DHDMSHOSRA12	1,645/-
16	DHDMSHOSRA16	2,055/-



## Single Door Consumer unit without MCB &amp; Isolator

HSN Code - 8537

No. of Ways	Regal Grey Cat. No.	List Price ₹
2+4	DHDCSHOSRW04	1,075/-
2+8	DHDCSHOSRW08	1,435/-
2+12	DHDCSHOSRW12	1,730/-

## TP&amp;N Vertical



## TP&amp;N Vertical

HSN Code - 8537

No. of Ways	I/C+O/G	Single Door	List Price ₹	Double Door	List Price ₹
4	8+12	DHDMTVOSRW04	6,085/-	DHDPTVODRW04	8,600/-
8	8+24	DHDMTVOSRW08	8,515/-	DHDPTVODRW08	10,740/-
12	8+36	DHDMTVOSRW12	10,935/-	DHDPTVODRW12	14,165/-

## TP&amp;N Vertical Loadline

Loadline DBs are fitted with Bus Bars, Neutral Links, Blanking Plates (without MCCB)

HSN Code - 8537



No. of Ways	Cat. No.	Description	List Price ₹
		<b>SINGLE DOOR</b>	<b>SUITABLE FOR TP/FP 'G FRAME' MCCB</b>
4	DHDLVSRWGOFO04	DB LL 4W SD VERT W/O MCCB	7,290/-
8	DHDLVSRWGOFO08	DB LL 8W SD VERT W/O MCCB	9,315/-
12	DHDLVSRWGOFO12	DB LL 12W SD VERT W/O MCCB	11,350/-
		<b>DOUBLE DOOR</b>	<b>SUITABLE FOR TP/FP 'G FRAME' MCCB</b>
4	DHDLVDRWGOFO04	DB LL 4W DD VERT W/O MCCB	9,200/-
8	DHDLVDRWGOFO08	DB LL 8W DD VERT W/O MCCB	10,630/-
12	DHDLVDRWGOFO12	DB LL 12W DD VERT W/O MCCB	12,540/-
		<b>DOUBLE DOOR</b>	<b>SUITABLE FOR TP/FP 'A FRAME' MCCB - 250A</b>
4	DHDLVDRWAOF004	DB LL 4W DD VERT W/O MCCB	10,630/-
8	DHDLVDRWAOF008	DB LL 8W DD VERT W/O MCCB	13,855/-
12	DHDLVDRWAOF012	DB LL 12W DD VERT W/O MCCB	17,915/-

Note: (i) MCCBs & Accessories Should Be Selected And Purchased Separately

(ii) For Any Other Configuration Contact Us

(iii) For Appropriate MCCB Price, Please see Havells IP List Price

## 7 Segment



## 7 Segment

HSN Code - 8537

No. of Ways	Regal Grey Cat. No. (DD).	I/C	List Price ₹
4	DHDMTHDDR04	Eight way	7,405/-
6	DHDMTHDDR06	Eight way	8,840/-
8	DHDMTHDDR08	Eight way	11,340/-
12	DHDMTHDDR12	Eight way	12,440/-



## Per Phase Isolation



## Per Phase Isolation (PPI) Vertical - 4 Tier

HSN Code - 8537

No. of Ways	I/C + O/G	Regal Grey Cat. No. (DD).	List Price ₹
2+8	4+6+24	DHDPTVPDRW08	9,730/-
2+12	4+6+36	DHDPTVPDRW12	12,040/-



## Per Phase Isolation (PPI) Horizontal- QVE Series

suitable for MCB / RCCB / Isolator as incomer

HSN Code - 8537

No. of Ways	I/C + O/G	Regal Grey Cat. No. (DD)	List Price ₹
2+4	4+6+12	DHDNTHPDRW04	4,700/-
2+6	4+6+18	DHDNTHPDRW06	6,115/-
2+8	4+6+24	DHDNTHPDRW08	7,300/-

## Prewired

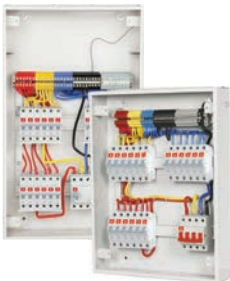


## SP&amp;N Prewired

(with cable end box)

HSN Code - 8537

No. of Ways	IC/OG	DD Cat. No.	List Price ₹*
6	2+6	DHDMSHMLRW06	4,505/-
8	2+8	DHDMSHMLRW08	5,245/-
10	2+10	DHDMSHMLRW10	6,645/-
12	2+12	DHDMSHMLRW12	7,815/-
16	2+16	DHDMSHMLRW16	8,850/-



## TP&amp;N Prewired

HSN Code - 8537

No. of Ways	IC/OG	DD Cat. No. (without cable end box)	List Price ₹*	DD Cat. No. (with cable end box)	List Price ₹*
4	8+12	DHDMTHMKDRA04	9,285/-	DHDMTHMLXW04	9,645/-
6	8+18	DHDMTHMKDRA06	11,190/-	DHDMTHMLXW06	11,560/-
8	8+24	DHDMTHMKDRA08	12,870/-	DHDMTHMLXW08	13,365/-
12	8+36	DHDMTHMKDRA12	15,550/-	DHDMTHMLXW12	15,555/-

## IP 54



## SP&amp;N (IP 54)

HSN Code - 8537

No. of Ways	Description	Horizontal Cat. No.	List Price ₹
4	SPN DB DD 04W	DHDMSHODRW040002	5,595/-
8	SPN DB DD 08W	DHDMSHODRW080002	6,445/-
12	SPN DB DD 12W	DHDMSHODRW120002	7,660/-



## TP&amp;N (IP 54)

HSN Code - 8537

No. of Ways	Description	Horizontal Cat. No.	List Price ₹	Vertical Cat. No.	List Price ₹
4	TPN DB DD 04W	DHDMTHODRW040002	8,880/-	-	-
8	TPN DB DD 08W	DHDMTHODRW080002	11,680/-	DHDMTVODR080002	22,870/-
12	TPN DB DD 12W	DHDMTHODRW120002	16,175/-	DHDMTVODR120002	26,765/-



## Protection Devices

- Surge Protection Devices ..... 12
- Miniature Circuit Breaker (MCB) ..... 13
- Residual Current Circuit Breaker (RCCB) ..... 14
- Residual Current Circuit Breaker with Overload & Short-Circuit Protection (RCBO) ..... 15
- Solutions for Downstream Protection ..... 16

## Surge Protection Devices

Today's residential, commercial and industrial set-ups are heavily reliant on the continuous and efficient running of electrical and electronic systems. Over-voltage surges are a major cause of failure of these equipment.

Such transient over-voltage surges are often generated due to direct/indirect effects of lightning strikes, switching of utility grid or capacitor banks, electrical accidents, turning on/off of nearby heavy load machines, AC chillers, motors, pumps, circuit-breaker tripping etc.

Surges can cause destruction of electronic circuitry components, logic failures and breakdowns. Loss of operation, loss of service, loss of data, and loss of production can be huge and by far higher than the cost of damaged equipment. Long term exposure to lower level transient over-voltages can also lead to premature ageing of equipment.

Havells offers a comprehensive range of Surge Protection Devices designed to protect your installation by limiting transient over-voltages and diverting surge currents to ground.

### Features:

- Visual & remote end-of-life indicators.
- Simple, Professional Installation of Arrester Modules
- High Terminal Capacity - 35sqm for Ease of Installation.
- Bi-stable Snap-pusher for Easy Installation and Extraction from DIN-rail.
- TUV Tested and approved.

### Range

AC SPD's  
Type 1+2, Type 2

DC SPD's  
Type 1+2, Type 2

Dataline SPD  
6, 12, 24, 48 V



### Remote Signaling Contact

- Option to remotely monitor the status of the surge protector.
- Simplified cabling thanks to a single terminal for monitoring all poles.



### End of Life Indicator

Green shows the satisfactory operation and Red indicates that Cartridge must be replaced.



### Pluggable Cartridges

- Faulty cartridges can be replaced without changing the entire SPD.
- Cartridges can be replaced with mains voltage ON.
- All cartridges are marked with characteristics for ease of maintenance.



### Dedicated Protection of the Neutral

The 1P+N and 3P+N SPDs with dedicated protection of the neutral pole discharge the common and differential mode overvoltages that may occur in installations with TT and TN systems, when there is a voltage surge.

EURO II SPD



Type 1+2 AC Surge Protection Device

HSN Code - 8536

Order Code	Poles	Uc (V)	In (kA)	Iimp (kA)	I <sub>max</sub> (kA)	Up (kV)	Remote Signaling	List Price ₹
DHSAANBC50320	TP+N	320	20	12.5	50	1.5	No	10,815/-
DHSAANAC50320	1P+N	320	20	12.5	50	1.5	No	5,890/-
DHSAARBC50320	TP+N	320	20	12.5	50	1.5	Yes	11,055/-
DHSAARAC50320	1P+N	320	20	12.5	50	1.5	Yes	6,130/-

Cartridges

HSN Code - 8536

Order Code	Pole	Uc (V)	In (kA)	Iimp (kA)	I <sub>max</sub> (kA)	Up (kV)	List Price ₹
DSSRCX0149	L - N	320	20	12.5	50	1.5	2,200/-
DSSRCX0150	N - PE	255	40	12.5	70	1.5	2,700/-



Type 2 AC Surge Protection Device

HSN Code - 8536

Order Code	Poles	Uc (V)	In (kA)	I <sub>max</sub> (kA)	Up (kV)	Remote Signaling	List Price ₹
DHSA2N1N40320	1P	320	20	40	1.5	No	1,785/-
DHSA2N1N40275	1P	275	20	40	1.3	No	1,785/-
DHSA2NAN40320	1P+N	320	20	40	1.5	No	2,985/-
DHSA2NAN40275	1P+N	275	20	40	1.3	No	2,985/-
DHSA2NBN40320	TP+N	320	20	40	1.5	No	5,310/-
DHSA2NBN40275	TP+N	275	20	40	1.3	No	5,310/-
DHSA2R1N40320	1P	320	20	40	1.5	Yes	1,980/-
DHSA2R1N40275	1P	275	20	40	1.3	Yes	1,980/-
DHSA2RAN40320	1P+N	320	20	40	1.5	Yes	3,175/-
DHSA2RAN40275	1P+N	275	20	40	1.3	Yes	3,175/-
DHSA2RBN40320	TP+N	320	20	40	1.5	Yes	5,505/-
DHSA2RBN40275	TP+N	275	20	40	1.3	Yes	5,505/-

Cartridges

HSN Code - 8536

Order Code	Pole	Uc (V)	In (kA)	I <sub>max</sub> (kA)	Up (kV)	List Price ₹
DSSRCX0151	L - N	320	20	40	1.5	900/-
DSSRCX0152	L - N	275	20	40	1.3	900/-
DSSRCX0153	N - PE	255	20	40	1.5	1,200/-



Type 1+2 Photovoltaic Surge Protection Device

HSN Code - 8535

Order Code	Uc <sub>pv</sub> (V)	In (kA)	Iimp (kA)	I <sub>max</sub> (kA)	Up (kV)	Remote Signaling	List Price ₹
DHSDANCC6012H	1200 Vdc	20	12.5	60	4	No	15,740/-
DHSDARCC6012H	1200 Vdc	20	12.5	60	4	Yes	15,980/-
DHSDANCB4012H	1200 Vdc	20	6	40	4	No	6,500/-
DHSDARCB4012H	1200 Vdc	20	6	40	4	Yes	6,735/-

Cartridges

HSN Code - 8536

Order Code	Pole	Uc <sub>pv</sub> (V)	In (kA)	Iimp (kA)	I <sub>max</sub> (kA)	Up (kV)	List Price ₹
DSSRCX0154	-	1200 Vdc	20	6	40	4	1,200/-



Type 2 Photovoltaic Surge Protection Device

HSN Code - 8535

Order Code	Uc <sub>pv</sub> (V)	In (kA)	I <sub>max</sub> (kA)	Up (kV)	Remote Signaling	List Price ₹
DHSD2NCN4012H	1200 Vdc	20	40	4	No	3,040/-
DHSD2RCN4012H	1200 Vdc	20	40	4	Yes	3,235/-

Cartridges

HSN Code - 8536

Order Code	Pole	Uc <sub>pv</sub> (V)	In (kA)	I <sub>max</sub> (kA)	Up (kV)	List Price ₹
DSSRCX0155	-	1200 Vdc	20	40	4	700/-



Dataline Surge Protection Device

HSN Code - 8536

Order Code	Un (V)	In (kA)	Iimp (kA)	I <sub>max</sub> (kA)	Up (V)	Remote Signaling	List Price ₹
DHSDDN1A20006	6	5	5	20	20	No	2,585/-
DHSDDN1A20012	12	5	5	20	30	No	2,585/-
DHSDDN1A20024	24	5	5	20	40	No	2,760/-
DHSDDN1A20048	48	5	5	20	70	No	2,760/-

\* Spare Cartridges Available on Request.

List Price are in Indian rupees as per Havells Regular Terms & Conditions

## MCB



## 'B' Series SP MCB

(In accordance with IS/IEC 60898-1) 240V, 50Hz, 10kA Suitable for lighting and other domestic loads

HSN Code - 8536

Rating	SP Cat. No.	List Price ₹
6-32A	DHMGBSPF006-032	180/-
40A	DHMGBSPF040	435/-

## 'C' Series MCB

(In accordance with IS/IEC 60898-1) 240/415V, 50Hz, 10kA Suitable for Motor and other Inductive loads

HSN Code - 8536



Rating	SP Cat. No.	List Price ₹	SPN Cat. No.	List Price ₹	DP Cat. No.	List Price ₹
0.5-5A	DHMGCSPPF0x5-005	320/-	DHMGCSNF0x5-005	710/-	DHMGCDPF0x5-005	825/-
6-32A	DHMGCSPPF006-032	220/-	DHMGCSNF006-032	640/-	DHMGCDPF006-032	660/-
40A	DHMGCSPPF040	465/-	DHMGCSNF040	955/-	DHMGCDPF040	1,025/-
50A	DHMGCSPPF050	510/-	DHMGCSNF050	1,025/-	DHMGCDPF050	1,105/-
63A	DHMGCSPPF063	510/-	DHMGCSNF063	1,025/-	DHMGCDPF063	1,105/-
Rating	TP Cat. No.	List Price ₹	TPN Cat. No.	List Price ₹	FP Cat. No.	List Price ₹
0.5-5A	DHMGCTPF0x5-005	1,060/-	DHMGCTNF0x5-005	1,565/-	DHMGCFPF0x5-005	1,655/-
6-32A	DHMGCTPF006-032	1,025/-	DHMGCTNF006-032	1,385/-	DHMGCFPF006-032	1,445/-
40A	DHMGCTPF040	1,495/-	DHMGCTNF040	1,975/-	DHMGCFPF040	1,990/-
50A	DHMGCTPF050	1,575/-	DHMGCTNF050	2,025/-	DHMGCFPF050	2,085/-
63A	DHMGCTPF063	1,575/-	DHMGCTNF063	2,025/-	DHMGCFPF063	2,085/-

## 'D' Series MCB

(In accordance with IEC 60898-1) 240/415V, 50Hz Suitable for high inrush current loads.

HSN Code - 8536



Rating	SP Cat. No.	List Price ₹	DP Cat. No.	List Price ₹
0.5-5A	DHMGDSPF0x5-005	335/-	DHMGDDPF0x5-005	895/-
6-32A	DHMGDSPF006-032	290/-	DHMGDDPF006-032	730/-
40A	DHMGDSPF040	525/-	DHMGDDPF040	1,100/-
50A	DHMGDSPF050	535/-	DHMGDDPF050	1,160/-
63A	DHMGDSPF063	535/-	DHMGDDPF063	1,160/-
Rating	TP Cat. No.	List Price ₹	FP Cat. No.	List Price ₹
0.5-5A	DHMGDTPF0x5-005	1,370/-	DHMGDFPF0x5-005	1,665/-
6-32A	DHMGDTPF006-032	1,125/-	DHMGDFPF006-032	1,495/-
40A	DHMGDTPF040	1,640/-	DHMGDFPF040	2,050/-
50A	DHMGDTPF050	1,750/-	DHMGDFPF050	2,225/-
63A	DHMGDTPF063	1,750/-	DHMGDFPF063	2,225/-



## Higher Rating MCB (80 to 125A) 'C' Series,

(In accordance with IEC 60947-2) 240/415V, 50 Hz, 10kA

HSN Code - 8536

Rating	SP Cat. No.	List Price ₹	DP Cat. No.	List Price ₹	TP Cat. No.	List Price ₹	FP Cat. No.	List Price ₹
80A	DHMJCSPF080	1,795/-	DHMJCDFPF080	3,925/-	DHMJCTPF080	5,730/-	DHMJCFFPF080	7,145/-
100A	DHMJCSPF100	2,010/-	DHMJCDFPF100	4,030/-	DHMJCTPF100	6,030/-	DHMJCFFPF100	7,805/-
125A	DHMJCSPF125	2,205/-	DHMJCDFPF125	4,605/-	DHMJCTPF125	6,785/-	DHMJCFFPF125	8,285/-



**'DC' Series MCB**

For DC Supply, upto 220V

HSN Code - 8536

Rating	SP Cat. No.	List Price ₹	DP Cat. No.	List Price ₹
0.5-5A	DHMGESPF0x50022 - 0050022	360/-	DHMGEDPF0x50022 - 0050022	850/-
6-32A	DHMGESPF0060022 - 0320022	350/-	DHMGEDPF0060022 - 0350022	690/-
40A	DHMGESPF0400022	470/-	DHMGEDPF0400022	985/-
50A-63A	DHMGESPF0500022 - 0630022	550/-	DHMGEDPF0500022 - 0630022	1,095/-

**'DC' Series MCB for Railway application**

Fitted with extended terminals & mounting brackets, Drg. SKEL. 3700 alt-1 & specification No. SPEC/E-12/1/04

HSN Code - 8536

Rating	SP Cat. No.	MRP ₹
0.5-5A	DHMCSPF0x50013 - 0050013	390/-
6-35A	DHMCSPF0060013 - 0350013	380/-
40A	DHMCSPF0400013	505/-
50A-63A	DHMCSPF0500013 - 0630013	545/-

\* 'AC' Series also available on request.

**Mini MCB**

'C' Series (In accordance with IS/IEC 60898-1) 240/415V, 50Hz, 3kA

HSN Code - 8536

Rating	SP Cat. No.	List Price ₹	DP Cat. No.	List Price ₹
6A-32A	DHMNCSPA006-032	140/-	DHMNCSPA006-032	295/-



**RCCB - 'AC' Type**

**RCCB - 'AC' Type**

(In accordance with IS 12640-1 & IEC 61008-1) 240/415, 50Hz with 10kA short circuit withstand capacity

HSN Code - 8536

Rating (DP)	30mA Cat. No.	List Price ₹	100mA Cat. No.	List Price ₹	300mA Cat. No.	List Price ₹
16A	DHRGCTDF030016	2,690/-	DHRGCTDF100016	2,630/-	DHRGCTDF300016	2,630/-
25A	DHRGCTDF030025	2,690/-	DHRGCTDF100025	2,630/-	DHRGCTDF300025	2,630/-
32A	DHRGCTDF030032	2,710/-	DHRGCTDF100032	2,680/-	DHRGCTDF300032	2,710/-
40A	DHRGCTDF030040	2,710/-	DHRGCTDF100040	2,680/-	DHRGCTDF300040	2,710/-
63A	DHRGCTDF030063	3,550/-	DHRGCTDF100063	3,550/-	DHRGCTDF300063	3,550/-
Rating (FP)	30mA Cat. No.	List Price ₹	100mA Cat. No.	List Price ₹	300mA Cat. No.	List Price ₹
25A	DHRGCRFF030025	3,355/-	DHRGCRFF100025	3,245/-	DHRGCRFF300025	3,245/-
40A	DHRGCRFF030040	3,380/-	DHRGCRFF100040	3,305/-	DHRGCRFF300040	3,305/-
63A	DHRGCRFF030063	3,560/-	DHRGCRFF100063	3,560/-	DHRGCRFF300063	3,560/-



**Higher Rating RCCB**

**Higher Rating RCCB (80-100A) DP**

(In accordance with IS 12640-1 & IEC 61008-1) 240/415, 50Hz with 10kA short circuit withstand capacity

HSN Code - 8536

Rating (DP)	30mA Cat. No.	List Price ₹	100mA Cat. No.	List Price ₹	300mA Cat. No.	List Price ₹
80A	DHRMCMDF030080	5,485/-	DHRMCMDF100080	5,485/-	DHRMCMDF300080	5,485/-
100A	DHRMCMDF030100	5,570/-	DHRMCMDF100100	5,570/-	DHRMCMDF300100	5,570/-
Rating (FP)	30mA Cat. No.	List Price ₹	100mA Cat. No.	List Price ₹	300mA Cat. No.	List Price ₹
80A	DHRMCMFF030080	5,760/-	DHRMCMFF100080	5,760/-	DHRMCMFF300080	5,760/-
100A	DHRMCMFF030100	5,910/-	DHRMCMFF100100	5,910/-	DHRMCMFF300100	5,910/-



**RCCB - 'A' Type**

(In accordance with IS 12640-1 & IEC 61008-1) 240/415, 50Hz with 10kA short circuit withstand capacity

HSN Code - 8536

Rating (DP)	30mA Cat. No.	List Price ₹	100mA Cat. No.	List Price ₹	300mA Cat. No.	List Price ₹
16A	DHRMAMDF030016	3,200/-	DHRMAMDF100016	3,090/-	DHRMAMDF300016	3,090/-
25A	DHRMAMDF030025	3,200/-	DHRMAMDF100025	3,090/-	DHRMAMDF300025	3,090/-
32A	DHRMAMDF030032	3,365/-	DHRMAMDF100032	3,290/-	DHRMAMDF300032	3,290/-
40A	DHRMAMDF030040	3,365/-	DHRMAMDF100040	3,290/-	DHRMAMDF300040	3,290/-
63A	DHRMAMDF030063	4,045/-	DHRMAMDF100063	3,920/-	DHRMAMDF300063	3,920/-
Rating (FP)	30mA Cat. No.	List Price ₹	100mA Cat. No.	List Price ₹	300mA Cat. No.	List Price ₹
16A	DHRMAMFF030016	3,855/-	DHRMAMFF100016	3,735/-	DHRMAMFF300016	3,735/-
25A	DHRMAMFF030025	3,855/-	DHRMAMFF100025	3,735/-	DHRMAMFF300025	3,735/-
32A	DHRMAMFF030032	3,910/-	DHRMAMFF100032	3,790/-	DHRMAMFF300032	3,790/-
40A	DHRMAMFF030040	3,910/-	DHRMAMFF100040	3,790/-	DHRMAMFF300040	3,790/-
63A	DHRMAMFF030063	4,110/-	DHRMAMFF100063	4,040/-	DHRMAMFF300063	4,040/-



## RCBO

RCBO is designed for use in domestic, commercial and industrial distribution systems at the most downstream circuit for ensuring protection from leakage current, short circuit & over load to the user for a particular circuit. In normal use, it is safe to use and free of threat to user as well as to environment.

## RCBO - A Type (SPN - 2M)

(In accordance with IS 12640-2 & IEC 61009-1) 240/415V, 50Hz, with 10 kA short circuit capacity

HSN Code - 8536



Rating (SPN)	30mA Cat. No.	List Price ₹	100mA Cat. No.	List Price ₹	300mA Cat. No.	List Price ₹
6A	DHCEACSN2030006	3,310/-	DHCEACSN2100006	3,310/-	DHCEACSN2300006	3,310/-
10A	DHCEACSN2030010	3,310/-	DHCEACSN2100010	3,310/-	DHCEACSN2300010	3,310/-
16A	DHCEACSN2030016	3,310/-	DHCEACSN2100016	3,310/-	DHCEACSN2300016	3,310/-
20A	DHCEACSN2030020	3,310/-	DHCEACSN2100020	3,310/-	DHCEACSN2300020	3,310/-
25A	DHCEACSN2030025	3,310/-	DHCEACSN2100025	3,310/-	DHCEACSN2300025	3,310/-
32A	DHCEACSN2030032	3,310/-	DHCEACSN2100032	3,310/-	DHCEACSN2300032	3,310/-
40A	DHCEACSN2030040	4,080/-	DHCEACSN2100040	4,080/-	DHCEACSN2300040	4,080/-

## RCBO - A Type (TPN - 4M)

(In accordance with IS 12640-2 & IEC 61009-1) 240/415V, 50Hz, with 10 kA short circuit capacity

HSN Code - 8536



Rating (TPN)	30mA Cat. No.	List Price ₹	100mA Cat. No.	List Price ₹	300mA Cat. No.	List Price ₹
6A	DHCEACTN4030006	4,255/-	DHCEACTN4100006	4,255/-	DHCEACTN4300006	4,255/-
10A	DHCEACTN4030010	4,255/-	DHCEACTN4100010	4,255/-	DHCEACTN4300010	4,255/-
16A	DHCEACTN4030016	4,255/-	DHCEACTN4100016	4,255/-	DHCEACTN4300016	4,255/-
20A	DHCEACTN4030020	4,255/-	DHCEACTN4100020	4,255/-	DHCEACTN4300020	4,255/-
25A	DHCEACTN4030025	4,255/-	DHCEACTN4100025	4,255/-	DHCEACTN4300025	4,255/-
32A	DHCEACTN4030032	4,255/-	DHCEACTN4100032	4,255/-	DHCEACTN4300032	4,255/-
40A	DHCEACTN4030040	4,525/-	DHCEACTN4100040	4,525/-	DHCEACTN4300040	4,525/-

## Electromechanical 2P RCBOs used as (SPN &amp; 2P RCBOs)

(In accordance with IS 12640-2 & IEC 61009-1) 240/415V, 50Hz, with 10 kA short circuit capacity

HSN Code - 8536



Rating (SPN)	30mA Cat. No.	List Price ₹	100mA Cat. No.	List Price ₹	300mA Cat. No.	List Price ₹
32A	DHBMACDP4030032	3,500/-	DHBMACDP4100032	3,780/-	DHBMACDP4300032	4,100/-
40A	DHBMACDP4030040	3,850/-	DHBMACDP4100040	4,300/-	DHBMACDP4300040	4,650/-
63A	DHBMACDP4030063	4,725/-	DHBMACDP4100063	4,975/-	DHBMACDP4300063	5,225/-

## Electromechanical 4P RCBOs used as (TPN &amp; FP RCBOs)

(In accordance with IS 12640-2 & IEC 61009-1) 240/415V, 50Hz, with 10 kA short circuit capacity

HSN Code - 8536



Rating (TPN)	30mA Cat. No.	List Price ₹	100mA Cat. No.	List Price ₹	300mA Cat. No.	List Price ₹
32A	DHBMACTN8030032	4,400/-	DHBMACTN8100032	4,725/-	DHBMACTN8300032	4,925/-
40A	DHBMACTN8030040	4,450/-	DHBMACTN8100040	4,990/-	DHBMACTN8300040	5,250/-
63A	DHBMACTN8030063	5,300/-	DHBMACTN8100063	5,530/-	DHBMACTN8300063	5,530/-

## Home Safe



Havells HomeSafe is ready to use all-in-one device that provides protection to humans from electric shock due to direct or indirect contact as well as provide protection from overload and short circuit.

It is a one stop solution to protect appliances as well as humans operating it and it is designed for quick & easy installation.

## Home Safe SRCD

HSN Code - 8536

Description	Rating	DP Cat. No.	List Price ₹
Havells SRCD WOCP HomeSafe	16A	DHDPACSN2030016	1,225/-
Havells SRCD WOCP HomeSafe	20A	DHDPACSN2030020	1,225/-
Havells SRCD WOCP HomeSafe	25A	DHDPACSN2030025	1,225/-

\*WOCP: With Over-Current Protection

## Home Safe MCB

HSN Code - 8536

Description	DP Cat. No.	List Price ₹
DP C 06-32A mini MCB with enclosure	DHMPCDPA006-32	365/-

## SRCD DBOXx



Havells DBOXx SRCD is ready plug & play all-in-one device that provides protection to humans from electric shock due to direct or indirect contact as well as provides protection from overload and short circuit faults.

It is designed such that user can easily upgrade his installation by replacing existing socket boxes and get built-in protection.

## SRCD DBOXx (Socket Residual Current Device)

HSN Code - 8536

Rating	Description	Cat. Number	List Price ₹
<b>DBOXX SRCD Protected Socket (With Steel Enclosure)</b>			
16A	Havells SRCD WOCP Dboxx Steel Encl	DHDDCDP025201603	1,860/-
20A	Havells SRCD WOCP Dboxx Steel Encl	DHDDCDP025202003	1,860/-
25A	Havells SRCD WOCP Dboxx Steel Encl	DHDDCDP025202503	1,860/-
<b>DBOXX SRCD Protected Socket (With Plastic Enclosure for surface mounting)</b>			
16A	Havells SRCD WOCP Dboxx Plastic box	DHDBCDP025201603	1,800/-
20A	Havells SRCD WOCP Dboxx Plastic box	DHDBCDP025202003	1,800/-
25A	Havells SRCD WOCP Dboxx Plastic box	DHDBCDP025202503	1,800/-
<b>DBOXX MCB Protected Socket (Without Enclosure)</b>			
16A	Havells SRCD WOCP Dboxx W/O ENCL.	DHDACDP025201603	1,720/-
20A	Havells SRCD WOCP Dboxx W/O ENCL.	DHDACDP025202003	1,720/-
25A	Havells SRCD WOCP Dboxx W/O ENCL.	DHDACDP025202503	1,720/-

\*WOCP: With Over-Current Protection

## DBOXX MCB Protected Socket

HSN Code - 8536

Rating	Cat. No.	Description	List Price ₹
<b>(With Sheet Steel Enclosure)</b>			
16A	DHDMCSN0251016	16A MCB DBOXX COMBO	660/-
20A	DHDMCSN0251020	20A MCB DBOXX COMBO	660/-
25A	DHDMCSN0251025	25A MCB DBOXX COMBO	660/-
16A	DHDMCDP0253016	16A MCB DBOXX COMBO DP	860/-
20A	DHDMCDP0253020	20A MCB DBOXX COMBO DP	860/-
25A	DHDMCDP0253025	25A MCB DBOXX COMBO DP	860/-
<b>With Plastic Enclosure (for surface mounting)</b>			
16A	DHDTCSN0251016	16A MCB DBOXX COMBO Plastic	660/-
20A	DHDTCSN0251020	20A MCB DBOXX COMBO Plastic	660/-
25A	DHDTCSN0251025	25A MCB DBOXX COMBO Plastic	660/-
<b>Without Enclosure</b>			
16A	DHDWCSN0251016	16A MCB DBOXX COMBO W/O ENCL.	585/-
20A	DHDWCSN0251020	20A MCB DBOXX COMBO W/O ENCL.	585/-
25A	DHDWCSN0251025	25A MCB DBOXX COMBO W/O ENCL.	585/-
16A	DHDWCM30251016	16A MCB DBOXX COMBO 3M W/O ENCL.	555/-
20A	DHDWCM30251020	20A MCB DBOXX COMBO 3M W/O ENCL.	555/-
25A	DHDWCM30251025	25A MCB DBOXX COMBO 3M W/O ENCL.	555/-





## DBOXx MCB Protected Power Unit

Rating	Description	Cat. No.	List Price ₹
16-25A	16A-25A MCB Protected Power Unit	DHDUCDP0253016-25	1,080/-

HSN Code - 8536

## Plug &amp; Socket



## Plug &amp; Socket Box with Plastic Plug

HSN Code - 8537

Rating	Description	Cat. No.	List Price ₹
20A	Plug & Socket 20A DP With Plastic Plug	DHDPHP020	575/-
20A	Plug & Socket 20A SPN With Plastic Plug	DHDPHSN020	575/-



## DBOXx Plug and Socket

HSN Code - 8537

Rating	Description	Cat. No.	List Price ₹
20	Plug & Socket 20A DP With Plastic Cover	DHDCUDP020	885/-
20	Plug & Socket 20A SPN With Plastic Cover	DHDCUSN020	885/-



## Plug &amp; Socket Board

HSN Code - 8537

SP&N enclosure with 2 pole and Earth Metal Plug & Socket for incorporating 10A / 20A SPN / DP MCB			TP&N enclosure with 3 pole and Earth Metal Plug & Socket for incorporating TP MCB		
Amp	Cat. No.	List Price ₹	Amp	Cat. No.	List Price ₹
20	DHPUSN020/DHPUDP020	885/-	30	DHPUTN020 / DHPUTN030	2,735/-

## MCB Enclosure

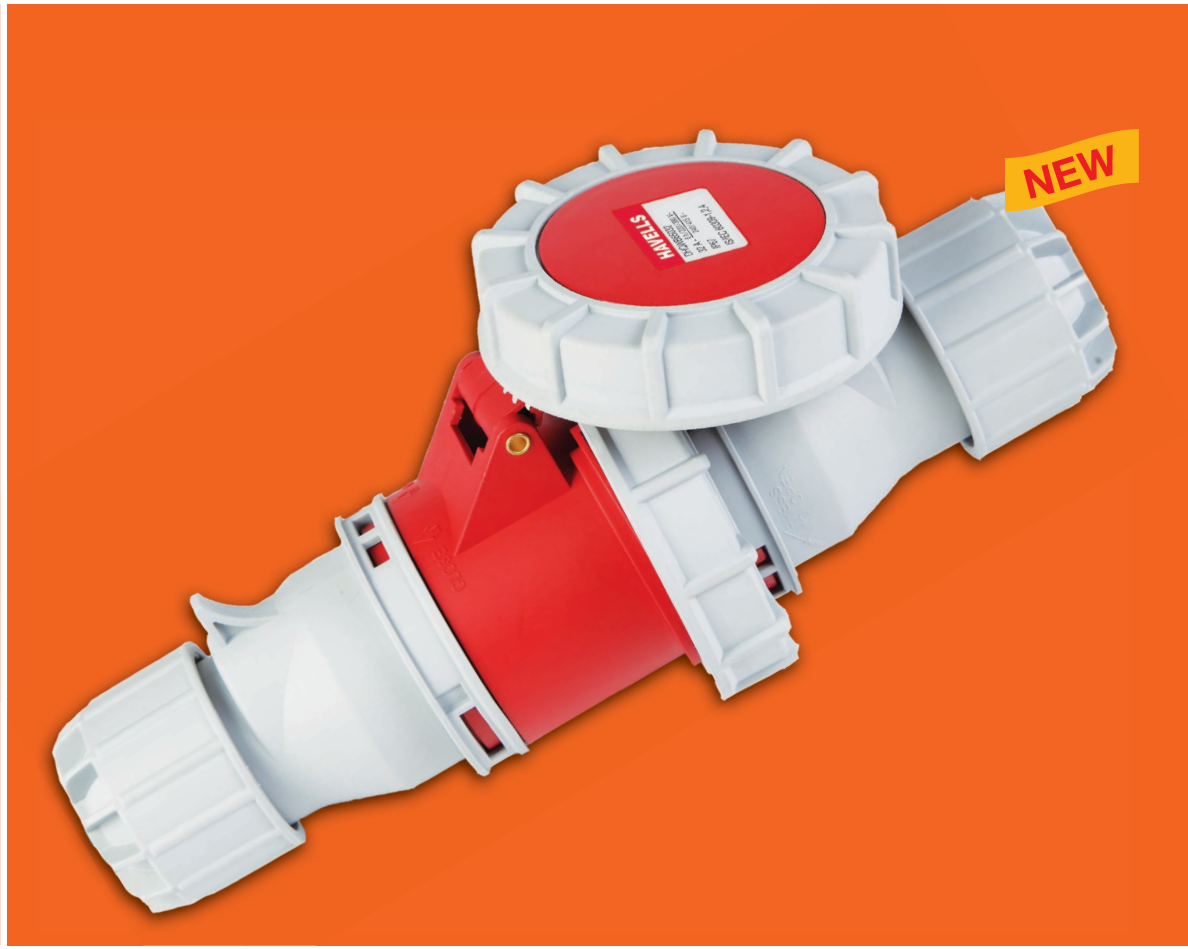


## MCB Enclosure (Cutout)

Sheet Steel, Phosphatised, Powder Painted MCB DBs with Din Rail (In accordance with IS 13032, IS 8623, IEC/BSEN 60439-3)

HSN Code - 8537

Plastic			Sheet Steel		
No. of Ways	Cat. No.	List Price ₹	No. of Ways	Cat. No.	List Price ₹
2	DHDEPDP	165/-	2	DHDESDP	280/-
4	DHDEFPF	245/-	4	DHDESFP	340/-



## ◆ Industrial Plug & Socket

- Plug ..... 20
- Connectors ..... 20
- Wall Mounted Socket ..... 20
- Panel Socket ..... 20
- Interlocking Socket ..... 21
- Plug & Socket for Reefer Container ..... 21
- Solution with Insulated Plug & Socket ..... 21

Industrial plug and socket are used to provide power in industrial environments and areas exposed to corrosive chemicals, extremes of weather and rough use with high demands on safety, reliability and durability. Havells provides a comprehensive range of plug and socket to suit all environments & applications, manufactured to the highest quality and having robust ergonomic design.

Havells industrial plug & socket range adopts 'preventing incorrect insertion' design and its high grade thermoplastic material ensures good electric insulation, high impact resistance, dustproof, damp proof and watertight connections. Nickel plated contacts provide better corrosion resistance in aggressive environments and at high degrees of air humidity.

HAVELLS provides IP 44 range of plug & socket, protected against splashing and spraying of water, and IP 67 weatherproof plug and socket range that can withstand temporary immersion in water. Some typical applications are highlighted below.

## Application

	 IP-44	 IP-67
Agriculture	Mobile or portable equipment or appliances used or stored on sheltered premises.	Outdoor installation of pumping, ventilation, drying equipment.
Chemical industry	Indoors on premises for storage and maintenance purposes where connections are not exposed to the risk of immersion or chemicals.	On premises without risk of explosions but where the connections are exposed to chemicals and subject to possible immersion.
Construction sites and shipyards	On covered construction sites sheltered against weathering but exposed to splashing with water.	On outdoor construction sites where the connections are left on damp ground exposed to freezing, dust and weathering.
Sports complexes and other places of public entertainment, TV and film studios	On sheltered premises protected against the weather, though exposed to splashing, without high connected loads.	Outdoor connections exposed to rain, snow, mud, freezing and other critical weather conditions. Where mated safety is required. Where high voltage for lighting installations, T.V. and audio are foreseen.
Food industry	In sheltered locations, on indoor premises used for storage and maintenance.	In locations subject to washing by hosing down and where connections are subject to heavy duty.
Heavy industry	In sheltered warehouses, maintenance workshops, assembly and moulding areas.	In rolling mills, foundries, blast furnaces, etc., where the connections are exposed to dust, metallic shavings, coolants and are subject to vibrations and impact.
Light industry	Locations without high humidity or ambient pollution serving for assembly, moulding, maintenance and storage	On premises subject to cleaning by means of chemical solvents. Also where heavy loads require high safety in connections.
Installations for IT centres	For electrical connections executed above floor level.	For electrical connections under raised floors with risk of immersion. Where heavy loads require high safety in connections.
Ports	In sheltered locations such as docks, repair shops, offices, etc.	Quays, docks, piers, etc. where there is risk of high waves and partial flooding.
Airports	In sheltered locations, hangars, repair shops, warehouses.	Outdoors for connection between mobile or portable appliances and aircraft.
Water treatment plants	Indoor use in repair shops, etc.	In all locations with risk of flooding and for outdoor use with pumps, aeration and ventilation systems.

## Industrial Plug



## Industrial Plug

HSN Code - 8536

Rating	Poles	Code	Type	Earth-Contact position	Pcs / Pckg	List Price ₹
16A	2P+E	DHQBA63016	IP44	6h	4	275/-
32A	2P+E	DHQBA63032	IP44	6h	4	445/-
16A	3P+N+E	DHQBA65016	IP44	6h	4	375/-
32A	3P+N+E	DHQBA65032	IP44	6h	4	530/-
16A	2P+E	DHQBB63016	IP67	6h	4	600/-
32A	2P+E	DHQBB63032	IP67	6h	4	945/-
16A	3P+N+E	DHQBB65016	IP67	6h	4	820/-
32A	3P+N+E	DHQBB65032	IP67	6h	2	980/-
63A	2P+E	DHQBB63063	IP67	6h	1	2,100/-
63A	3P+N+E	DHQBB65063	IP67	6h	1	2,490/-

## Industrial Connector



## Industrial Connector

HSN Code - 8536

Rating	Poles	Code	Type	Earth-Contact position	Pcs / Pckg	List Price ₹
16A	2P+E	DHQDA63016	IP44	6h	4	420/-
32A	2P+E	DHQDA63032	IP44	6h	4	520/-
16A	3P+N+E	DHQDA65016	IP44	6h	4	550/-
32A	3P+N+E	DHQDA65032	IP44	6h	4	740/-
16A	2P+E	DHQDB63016	IP67	6h	4	810/-
32A	2P+E	DHQDB63032	IP67	6h	4	1,130/-
16A	3P+N+E	DHQDB65016	IP67	6h	4	1,080/-
32A	3P+N+E	DHQDB65032	IP67	6h	2	1,270/-
63A	3P+N+E	DHQDB65063	IP67	6h	1	2,895/-

## Industrial Wall Mounted Socket



## Industrial Wall Mounted Socket

HSN Code - 8536

Rating	Poles	Code	Type	Earth-Contact position	Pcs / Pckg	List Price ₹
16A	2P+E	DHQSA63016	IP44	6h	2	540/-
32A	2P+E	DHQSA63032	IP44	6h	2	650/-
16A	3P+N+E	DHQSA65016	IP44	6h	2	600/-
32A	3P+N+E	DHQSA65032	IP44	6h	2	710/-
16A	2P+E	DHQSB63016	IP67	6h	2	895/-
32A	2P+E	DHQSB63032	IP67	6h	2	1,085/-
16A	3P+N+E	DHQSB65016	IP67	6h	2	1,135/-
32A	3P+N+E	DHQSB65032	IP67	6h	2	1,360/-
63A	3P+N+E	DHQSB65063	IP67	6h	1	3,325/-

## Industrial Panel Socket



## Industrial Panel Socket

HSN Code - 8536

Rating	Poles	Code	Type	Earth-Contact position	Pcs / Pckg	List Price ₹
16A	2P+E	DHQCA63016	IP44	6h	6	320/-
32A	2P+E	DHQCA63032	IP44	6h	4	555/-
16A	3P+N+E	DHQCA65016	IP44	6h	4	520/-
32A	3P+N+E	DHQCA65032	IP44	6h	4	630/-
16A	2P+E	DHQCB63016	IP67	6h	4	640/-
32A	2P+E	DHQCB63032	IP67	6h	4	750/-
16A	3P+N+E	DHQCB65016	IP67	6h	4	745/-
32A	3P+N+E	DHQCB65032	IP67	6h	3	975/-
63A	3P+N+E	DHQCB65063	IP67	6h	1	2,600/-

Industrial Plug & Socket for Reefer Container



Industrial Plug & Socket for Reefer Container

HSN Code - 8536

Category	Rating	Poles	Code	Type	Earth-Contact position	Pcs / Pckg	List Price ₹
Panel Socket	32A	3P+E	DHQCB34032	IP67	3h	4	975/-
Plug	32A	3P+E	DHQBB34032	IP67	3h	4	980/-
Connector	32A	3P+E	DHQDB34032	IP67	3h	4	1,270/-
Wall mounted socket	32A	3P+E	DHQSB34032	IP67	3h	2	1,360/-
Interlock socket	32A	3P+E	DHQWB34032	IP67	3h	1	5,985/-

Industrial Interlocking Socket



Industrial Interlocking Socket

HSN Code - 8536

Rating	Poles	Code	Type	Earth-Contact position	Pcs / Pckg	List Price ₹
16A	2P+E	DHQIA63016	IP44	6h	1	4,470/-
32A	2P+E	DHQIA63032	IP44	6h	1	5,730/-
16A	3P+N+E	DHQIA65016	IP44	6h	1	6,300/-
32A	3P+N+E	DHQIA65032	IP44	6h	1	6,765/-
16A	2P+E	DHQWB63016	IP67	6h	1	4,615/-
32A	2P+E	DHQWB63032	IP67	6h	1	5,985/-
16A	3P+N+E	DHQWB65016	IP67	6h	1	6,485/-
32A	3P+N+E	DHQWB65032	IP67	6h	1	7,200/-

Industrial Interlocking Socket with MCB Provision

HSN Code - 8536

Rating	Poles	Code	Type	Earth-Contact position	Pcs / Pckg	List Price ₹
63A	2P+E	DHQEB63063	IP67	6h	1	11,000/-*
63A	3P+N+E	DHQEB65063	IP67	6h	1	11,500/-*

\*MCB to be bought separately.

Solution with Insulated Plug & Socket



Solution with Insulated Plug & Socket

HSN Code - 8536

Rating	Poles	Code	Type	Earth-Contact position	Pcs / Pckg	List Price ₹
16A	2P+E	DHDPBDP016	IP40	6h	1	1,215/-
16A	3P+N+E	DHDPBTN016	IP40	6h	1	1,465/-
32A	2P+E	DHDPBDP032	IP40	6h	1	1,665/-
32A	3P+N+E	DHDPBTN032	IP40	6h	1	1,880/-

Note: MCB to be bought separately.



## ◆ Control & Monitoring Devices

- Automatic Changeover Devices..... 24
- Time Switch ..... 25
- Isolator ..... 25
- MCB Changeover..... 25
- Modular Contactors..... 26

## Modular Contractor

### AUTOMATIC MODULAR CONTACTOR

In automatic contactors the switching operation depends solely on the availability of coil supply. When coil supply is provided sufficient electromagnetic force is generated for closing the NO main contacts or opening the NC main contacts. In the absence of coil supply, the contacts revert to their original position.

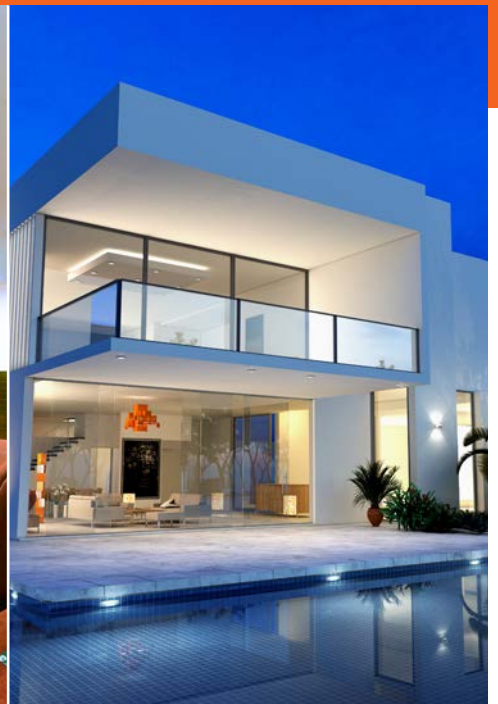
### AUTOMATIC MODULAR CONTACTOR WITH MANUAL OVERRIDE

Automatic Contactors with manual override knob have a manual over-ride switch to select between three function modes and 4 operating positions.

- Automatic Mode: It is the normal operating mode i.e. Contactor is operational (ON) when Coil voltage is applied and vice versa.
- ON Mode :
  - Temporary "ON" position: When manual knob is not locked at ON position – the main contacts remain ON as long as coil supply is absent. When oil supply becomes available, the contactor automatically reverts to automatic mode.
  - Permanent "ON" position: Here, the contactor is operational (ON) irrespective of the availability of coil supply.
- OFF Mode: Here, the contactor is shutdown irrespective of the availability of coil supply.

Manual override option provides customers with the following features:

- Functional test prior to start/commissioning
- High degree of safety and availability in case of automation system failure
- Testing or repairs can be carried out safely, reliably and quickly without interrupting other automatic functions.
- Force ON and Force OFF feature allows user to run high energy load during low tariff periods only, thereby over-ruling the normal operation of contactor at all times.



## ACCL



## 3 Module SPN ACCL (Automatic Source Changeover with Current Limiter)

HSN Code - 8536

Mains Rating	Gen Rating	Product Code	Description	List Price ₹
SPN 30 (6000 W)	SPN 1.5 (300W)	DHADOSN301X	30A/1.5A ACCL W/O GEN START/STOP	1,595/-
SPN 30 (6000 W)	SPN 2.5 (500W)	DHADOSN302X	30A/2.5A ACCL W/O GEN START/STOP	1,595/-
SPN 30 (6000 W)	SPN 3 (600W)	DHADOSN3003	30A/03A ACCL W/O GEN START/STOP	1,595/-
SPN 30 (6000 W)	SPN 4 (800W)	DHADOSN3004	30A/4A ACCL W/O GEN START/STOP	1,595/-
SPN 30 (6000 W)	SPN 5 (1000W)	DHADOSN3005	30A/5A ACCL W/O GEN START/STOP	1,595/-
SPN 30 (6000 W)	SPN 6 (1200W)	DHADOSN3006	30A/06A ACCL W/O GEN START/STOP	1,595/-
SPN 30 (6000 W)	SPN 9 (1800W)	DHADOSN3009	30A/09A ACCL W/O GEN START/STOP	1,595/-
SPN 30 (6000 W)	SPN 12 (2400W)	DHADOSN3012	30A/12A ACCL W/O GEN START/STOP	1,595/-
SPN 30 (6000 W)	SPN 15 (3000W)	DHADOSN3015	30A/15A ACCL W/O GEN START/STOP	1,595/-
SPN 30 (6000 W)	SPN 20 (4000W)	DHADOSN3020	30A/20A ACCL W/O GEN START/STOP	1,595/-



## Premium SPN ACCL (Automatic Source Changeover with Current Limiter)

HSN Code - 8536

Gen Rating	Description	Cat. No. w/o GEN Start/Stop	List Price ₹	Cat. No. with GEN Start/Stop	List Price ₹
SPN 1.5 (300W)	30A/1.5A ACCL	DHABOSN301X	1,970/-	-	-
SPN 2.5 (500W)	30A/2.5A ACCL	DHABOSN302X	1,970/-	-	-
SPN 3 (600W)	30A/03A ACCL	DHABOSN3003	1,970/-	DHABWSN3003	2,195/-
SPN 4 (800W)	30A/4A ACCL	DHABOSN3004	1,970/-	-	-
SPN 5 (1000W)	30A/5A ACCL	DHABOSN3005	1,970/-	-	-
SPN 6 (1200W)	30A/06A ACCL	DHABOSN3006	1,970/-	DHABWSN3006	2,195/-
SPN 9 (1800W)	30A/09A ACCL	DHABOSN3009	1,970/-	DHABWSN3009	2,195/-
SPN 12 (2400W)	30A/12A ACCL	DHABOSN3012	1,970/-	DHABWSN3012	2,195/-
SPN 15 (3000W)	30A/15A ACCL	DHABOSN3015	1,970/-	DHABWSN3015	2,195/-
SPN 20 (4000W)	30A/20A ACCL	DHABOSN3020	1,970/-	DHABWSN3020	2,195/-



## Automatic Changeover

HSN Code - 8536

Gen Rating	Description	Cat. No. w/o GEN Start/Stop	List Price ₹	Cat. No. with GEN Start/Stop	List Price ₹
SPN 30 (6000 W)	SPN 30 (6000 W)	DHAAOSN3030	1,860/-	DHAAWSN3030	2,035/-
SPN 63 (12600 W)	SPN 63 (12600 W)	DHAAOSN6363	4,375/-	DHAAWSN6363	4,485/-



## TPN ACCL (TPN/SPN) (Automatic Source Changeover with Current Limiter)

HSN Code - 8536

Gen Rating	Description	Cat. No.	List Price ₹	Cat. No. with GEN Start/Stop	List Price ₹
20A	40A/20A TPN/SPN ACCL	DHACOTN4020	11,650/-	DHACWTN4020	11,940/-
25A	40A/25A TPN/SPN ACCL	DHACOTN4025	11,650/-	DHACWTN4025	11,940/-
30A	40A/30A TPN/SPN ACCL	DHACOTN4030	11,650/-	DHACWTN4030	11,940/-
40A	40A/40A TPN/SPN ACCL	DHACOTN4040	11,650/-	DHACWTN4040	11,940/-
20A	63A/20A TPN/SPN ACCL	DHACOTN6320	17,340/-	DHACWTN6320	17,625/-
25A	63A/25A TPN/SPN ACCL	DHACOTN6325	17,340/-	DHACWTN6325	17,625/-
30A	63A/30A TPN/SPN ACCL	DHACOTN6330	17,340/-	DHACWTN6330	17,625/-
40A	63A/40A TPN/SPN ACCL	DHACOTN6340	17,340/-	DHACWTN6340	17,625/-
63A	80A/63A TPN/SPN ACCL	DHACOTN8063	28,425/-	-	-



## TPN ACCL (TPN/TPN) (Automatic Source Changeover with Current Limiter)

HSN Code - 8536

Gen Rating	Description	Cat. No.	List Price ₹	Cat. No. with GEN Start/Stop	List Price ₹
20A	40A/20A TPN/TPN ACCL	DHACOTT4020	11,940/-	DHACWTT4020	12,505/-
25A	40A/25A TPN/TPN ACCL	DHACOTT4025	11,940/-	DHACWTT4025	12,505/-
30A	40A/30A TPN/TPN ACCL	DHACOTT4030	11,940/-	DHACWTT4030	12,505/-
40A	40A/40A TPN/TPN ACCL	DHACOTT4040	11,940/-	DHACWTT4040	12,505/-
20A	63A/20A TPN/TPN ACCL	DHACOTT6320	17,625/-	DHACWTT6320	18,190/-
25A	63A/25A TPN/TPN ACCL	DHACOTT6325	17,625/-	DHACWTT6325	18,190/-
30A	63A/30A TPN/TPN ACCL	DHACOTT6330	17,625/-	DHACWTT6330	18,190/-
40A	63A/40A TPN/TPN ACCL	DHACOTT6340	17,625/-	DHACWTT6340	18,190/-
63A	63A/63A TPN/TPN ACCL	DHACOTT6363	24,165/-	-	-
63A	80A/63A TPN/TPN ACCL	DHACOTT8063	29,575/-	-	-



## Time Switch

Time switches are used in residential, commercial and industrial premises to improve comfort and save energy by switching loads automatically as per real time. Havells offers a variety of time switches to precisely meet the requirements of different applications. The range offers several feature benefits such as different options of minimum switching time, internal battery to enable the timing function in case of power failure, daily and weekly versions, simple and compact design.



## Time Switch

HSN Code - 9107

Description	Cat. No.	List Price ₹
24 Hour Analog Time Switch (SST* - 30 min)	DHTED30016	2,180/-
Programmable Time Switch 24 Hour (SST - 15 min)	DHTDD15016	2,315/-
Digital Weekly Programmable Time Switch (SST - 1 min)	DHTAW01016	2,170/-
Astronomical Weekly Programmable Time Switch (SST - 1 min)	DHTBW01006	2,500/-
Staircase Light Time Switch (Adjustment Range 0.5-20 Min)	DHTCNX5016	1,150/-

\* Shortest Switching Time

## MCB Isolator



## MCB ISOLATOR (Switching Devices)

MCB Isolators (AC-22A, In accordance with IS/IEC 60947-3) 240/415, 50Hz

HSN Code - 8536

Rating	SP Cat. No.	List Price ₹	DP Cat. No.	List Price ₹
40A	DHMGISPX040	280/-	DHMGIDPX040	395/-
63A	DHMGISPX063	325/-	DHMGIDPX063	510/-
80A	-	-	DHMGIDPX080	665/-
100A	-	-	DHMGIDPX100	665/-
125A	-	-	DHMGIDPX125	720/-
Rating	TP Cat. No.	List Price ₹	FP Cat. No.	List Price ₹
40A	DHMGITPX040	800/-	DHMGIFPX040	940/-
63A	DHMGITPX063	905/-	DHMGIFPX063	940/-
80A	DHMGITPX080	1,070/-	DHMGIFPX080	1,230/-
100A	DHMGITPX100	1,070/-	DHMGIFPX100	1,230/-
125A	DHMGITPX125	1,100/-	DHMGIFPX125	1,310/-

## Mini MCB Isolator



## Mini DP Isolator

In accordance with IS/IEC 60947-3, 240/415, 50Hz

HSN Code - 8536

Rating	DP Cat. No.	List Price ₹
40A	DHMNIDPX040	360/-

## MCB Changeover



## Two Way Centre Off Changeover Switch

For Dual Electricity Supply Management (In accordance with IS/IEC 60947-3)

HSN Code - 8536

Rating	DP Cat. No.	List Price ₹	FP Cat. No.	List Price ₹
25A	DHMGODPX025	1,200/-	DHMGOFPX025	2,100/-
40A	DHMGODPX040	1,500/-	DHMGOFPX040	2,700/-
63A	DHMGODPX063	1,700/-	DHMGOFPX063	3,100/-

## Automatic Modular Contactors



## Automatic Modular Contactors - SP (Applicable Standard - IEC 61095)

HSN Code - 8536

Poles	Rating	No. of Contacts	Width in multiples of 1 module (18mm)	Product Code	List Price ₹
1P	25	1 NO	1	DHPRG025110M	925/-



## Automatic Modular Contactors - DP (Applicable Standard - IEC 61095)

HSN Code - 8536

Poles	Rating	No. of Contacts	Width in multiples of 1 module (18mm)	Product Code	List Price ₹
2P	16	2 NO	1	DHPRF016120M	1,065/-
2P	25	2 NO	1	DHPRF025120M	1,295/-
2P	40	2 NO	2	DHPRF040220M	2,245/-
2P	63	2 NO	2	DHPRF063220M	2,700/-



## Automatic Modular Contactors - TP (Applicable Standard - IEC 61095)

HSN Code - 8536

Poles	Rating	No. of Contacts	Width in multiples of 1 module (18mm)	Product Code	List Price ₹
3P	25	3 NO	2	DHPRA025230M	1,655/-
3P	40	3 NO	3	DHPRA040330M	3,800/-
3P	63	3 NO	3	DHPRA063330M	4,125/-



## Automatic Modular Contactors - FP (Applicable Standard - IEC 61095)

HSN Code - 8536

Poles	Rating	No. of Contacts	Width in multiples of 1 module (18mm)	Product Code	List Price ₹
4P	25	4 NO	2	DHPRC025240M	1,760/-
4P	40	4 NO	3	DHPRC040340M	3,690/-
4P	63	4 NO	3	DHPRC063340M	4,560/-
4P	63	2 NO + 2 NC	3	DHPRC063322M	3,990/-

## Automatic Modular Contactors with Manual Override



Automatic Modular Contactors with Manual Override - SP (Applicable Standard - IEC 61095) HSN Code - 8536

Poles	Rating (A) AC-7a	No. of Contacts	Width in multiples of 1 module (18mm)	Product Code	List Price ₹
1P	25	1 NO	1	DHPMG025110M	1,075/-



Automatic Modular Contactors with Manual Override - DP (Applicable Standard - IEC 61095) HSN Code - 8536

Poles	Rating (A) AC-7a	No. of Contacts	Width in multiples of 1 module (18mm)	Product Code	List Price ₹
2P	16	2 NO	1	DHPMF016120M	1,125/-
2P	25	2 NO	1	DHPMF025120M	1,350/-
2P	40	2 NO	2	DHPMF040220M	2,300/-
2P	63	2 NO	2	DHPMF063220M	2,755/-



Automatic Modular Contactors with Manual Override - TP (Applicable Standard - IEC 61095) HSN Code - 8536

Poles	Rating (A) AC-7a	No. of Contacts	Width in multiples of 1 module (18mm)	Product Code	List Price ₹
3P	25	3 NO	2	DHPMA025230M	1,710/-
3P	40	3 NO	3	DHPMA040330M	3,860/-
3P	63	3 NO	3	DHPMA063330M	4,180/-



Automatic Modular Contactors with Manual Override - FP (Applicable Standard - IEC 61095) HSN Code - 8536

Poles	Rating (A) AC-7a	No. of Contacts	Width in multiples of 1 module (18mm)	Product Code	List Price ₹
4P	25	4 NO	2	DHPMC025240M	1,805/-
4P	40	4 NO	3	DHPMC040340M	3,935/-
4P	63	4 NO	3	DHPMC063340M	4,750/-

## Accessories for DB's Cable End Box (For mounting on top or bottom of Distribution Box for extra wire &amp; cables)

HSN Code - 8537

No. of Ways	Item	Cat No. (SD)	List Price ₹	Cat No. (DD)	List Price ₹
4	SP&N	DHDASHOS04	430/-	DHDASHOD04	585/-
8	SP&N	DHDASHOS08	555/-	DHDASHOD08	675/-
12	SP&N	DHDASHOS12	680/-	DHDASHOD12	820/-
16	SP&N	DHDASHOS16	800/-	DHDASHOD16	1,080/-
4	TP&N - Horizontal	DHDATHOS04	845/-	DHDATHOD04	900/-
6	TP&N - Horizontal	DHDATHOS06	970/-	DHDATHOD06	1,105/-
8	TP&N - Horizontal	DHDATHOS08	1,210/-	DHDATHOD08	1,335/-
12	TP&N - Horizontal	DHDATHOS12	1,575/-	DHDATHOD12	1,830/-
4/8/12	TP&N - Vertical	DHDATVOS04	1,335/-	DHDATVOD04	1,515/-
4/8/12	Loadline	DHDATVLS04	1,335/-	DHDATVLD04	1,450/-
2+8	PPI	DHDATVTS10	1,090/-	DHDATVTD10	1,210/-
2+12	PPI	DHDATVTS14	1,335/-	DHDATVTD14	1,450/-

## Plastic Channels

HSN Code - 8538

Cat. No.	P-Channel Description	Where used in List	List Price ₹
DSCPGMDBX099	SPN 12W Flat Grey	DHDSNVDRZ04040/63 DHDPTVPDRW08	290/-
DSCPGMDBX100	SPN 16W Flat Grey	DHDPTVODRW04/08/12 HDSDNVDRZ06040 DHDSNVDRZ06063 DHDSNVDRZ08040/63 DHDPTVPDRW12	320/-
DSCPGMDBX105	SPN 12W Flat Ivory	DHDSNVDPZ04040/63	290/-
DSCPGMDBX106	SPN 16W Flat Ivory	DHDSNVDPZ06040/63 DHDSNVDPZ08040/63	320/-
DSCPGMDBX126	SPN 4W Curve Grey	DHDPSHODRW04	290/-
DSCPGMDBX127	SPN 8W Curve Grey	DHDPSHODRW08 DHDPTHODRW04	320/-
DSCPGMDBX128	SPN 12W Curve Grey	DHDPSHODRW12 DHDPTHODRW06	360/-
DSCPGMDBX129	SPN 16W Curve Grey	DHDPSHODRW16 DHDPTHODRW08	380/-
DSCPGMDBX131	TPN 12W Curve Grey	DHDPTHODRW12	450/-
DSCPGMDBX132	SPN 4W Curve Ivory	DHDPSHODPW04	290/-
DSCPGMDBX133	SPN 8W Curve Ivory	DHDPSHODPW08 DHDPTHODPW04	315/-
DSCPGMDBX134	SPN 12W Curve Ivory	DHDPSHODPW12 DHDPTHODPW06	360/-
DSCPGMDBX135	SPN 16W Curve Ivory	DHDPSHODPW16 DHDPTHODPW08	380/-
DSCPGMDBX137	TPN 12W Curve Ivory	DHDPTHODPW12	430/-

## Plug &amp; Sockets

HSN Code - 8538

Cat. No.	Description	List Price ₹
DSSPLX0035	20 A DP PLUG ASSEMBLY	360/-
DSSPLX0036	20 A DP SOCKET ASSEMBLY	360/-
DSSPLX0037	30 A TP PLUG ASSEMBLY	760/-
DSSPLX0038	30 A TP SOCKET ASSEMBLY	760/-

## Rotary Switch

HSN Code - 8538

Cat. No.	Description	List Price ₹
DSCCPAMCX010	40A PHASE-SEL. SWITCH	635/-
DSCCPAMCX009	63A PHASE-SEL. SWITCH	940/-

## Auxiliary Contact (Factory Fitted)

HSN Code - 8536

Rating	Cat No.	List Price ₹
2-4A	DHMCCDPF00211-00411	930/-
6-32A	DHMCCDPF00611-03211	795/-
40A	DHMCCDPF04011	985/-
63A	DHMCCDPF06311	1,115/-

## Neutral Link &amp; Earth Link

HSN Code - 8538

Neutral Link Cat. No.	Earth Link Cat. No.	Description	List Price ₹
DSCBRCDXB002	-	2W P&S	155/-
DSCBRCDXB011	DSCBRCDXB006	SPN 4W	190/-
DSCBRCDXB090	DSCBRCDXB093	SPN 6W	220/-
DSCBRCDXB012	DSCBRCDXB007	SPN 8W	240/-
DSCBRCDXB013	DSCBRCDXB003	SPN 12W / TPN 4W	270/-
DSCBRCDXB014	DSCBRCDXB004	SPN 16W	310/-
DSCBRCDXB015	DSCBRCDXB005	TPN 6W	360/-
DSCBRCDXB016	DSCBRCDXB009	TPN 8W	400/-
DSCBRCDXB017	DSCBRCDXB008	TPN 12W	440/-

## Copper Bus Bar

HSN Code - 8538

Cat. No.	Description	List Price ₹
DSCCUPDBP028	BUSBAR SPN 4W	190/-
DSCCUPDBP032	BUSBAR SPN 6W	230/-
DSCCUPDBP029	BUSBAR SPN 8W	255/-
DSCCUPDBP030	BUSBAR SPN 12W	340/-
DSCCUPDBP031	BUSBAR SPN 16W	355/-

## Miscellaneous

HSN Code - 8538

Cat. No.	Description	List Price ₹
DSCPGMDBX019	N/L BASE	80/-
DSCPGMDBX001	Dummy (Blanking) Plate 18mm	25/-
DSCPGMDBX045	KNOB SNAP TYPE GREY	70/-
DSCPGMDBX046	KNOB SNAP TYPE PI	70/-
DSCCPAMCX005	GREEN INDICATOR SWITCH SMALL	80/-

## Indicator Light

(In accordance with IS/IEC 60947-5-1) 240V~, 50 Hz

HSN Code - 8531

Colour	TP Cat. No.	List Price ₹
Red	DHMCYSPX000	195/-
Amber	DHMCXSPX000	195/-
Blue	DHMCVSPX000	195/-
Green	DHMCZSPX000	195/-
Clear	DHMCWSPX000	195/-

## Shunt Trip (Factory Fitted)

HSN Code - 8536

Rating	Cat No.	List Price ₹
32A, 24V DC	DHMCCDPF03222	435/-
32A, 240V AC	DHMCCDPF0322400	1,735/-

## Contactor Auxiliary

HSN Code - 8536

Standard Compliance	Contacts Configuration	Product Code	List Price ₹
IEC 60947-5-1	1NO + 1NC	DSSRCX0147	1,285/-

**Terms & Conditions:** • Prices are in Indian ₹. • The List prices are inclusive of GST. Freight / Delivery charges if paid by Havells shall be on behalf of customer only. • Goods are dispatched by us on Purchaser's risk. All claims for loss, damage or shortage will be filed by the Purchasers directly with the carriers. • Disputes, if any are subject to Delhi jurisdiction only. • This List Price supercedes all our previous Price Lists. • Prices are subject to change without notice. • Company reserves the right to issue amendments, which may arise due to any errors in the list price.



## Havells India Ltd.

Corp Office: QRG Towers, 2D, Sector-126, Expressway, Noida-201304 (U.P), Ph. +91-120-3331000  
 Email: marketing@havells.com, www.havells.com  
 Consumer Care No.: 1800 11 0303 (Tollfree), 1800 103 1313 (All Connection), 011-4166 0303 (Landline)  
 Join us on Facebook at [www.facebook.com/havells](http://www.facebook.com/havells) and share your ways to save planet!  
 CIN - L31900DL1983PLC016304



# HAVELLS