

The beginning of  
an eternal journey.



Collection 2017

10  
YEARS WARRANTY



Havells India Limited a leading Fast Moving Electrical Goods (FMEG) Company and a major power distribution equipment manufacturer with a strong global footprint. Havells enjoys enviable market dominance across a wide spectrum of products, including Industrial & Domestic Circuit Protection Devices, Cables & Wires, Motors, Fans, Modular Switches, Home Appliances, Electric Water Heaters, Power Capacitors, CFL Lamps, Luminaires for Domestic, Commercial and industrial Applications.

Havells owns some of the most prestigious global brands like Havells, Crabtree, Sylvania, Concord, Luminance and Standard. Its global network constitutes of 6500 professionals across 91 branches. Its eleven state-of-the-art manufacturing plants in India located at Haridwar, Baddi, Noida, Sahibabad, Faridabad, Alwar and Neemrana.

A 20000 strong global distribution network continuously strives to set new benchmarks in prompt delivery and service to customers – powering their smiles like none other electrical brand in the country. Further to this the company pioneered the concept of exclusive brand showroom in the electrical industry with 'Havells Galaxy'. Today 350 plus Havells Galaxies across the country are helping customers, both domestic and commercial, to choose from a wide variety of products for different applications. Havells became the first FMEG Company to offer door step service via its initiative 'Havells Connect'. Thanks to the quality of products and quicker service, it has minimum customer complaints and highest customer satisfaction.

Today, Havells alongwith its brands, have earned the distinction of being the preferred choice of electrical products for discerning individuals and industrial consumers both in India and abroad. Havells offers same quality products for both Indian and international markets. Havells products & processes have acquired a number of International quality certifications, like BASEC, CSA, KEMA, CB, CE, ASTA, CPA, SEMKO, SIRIUM (Malaysia), SPRING (Singapore), TSE (Turkey), SNI (Indonesia) and EDD (Bahrain) – thus complying with stringent quality norms at even the most testing markets, worldwide. It is committed to keep powering the world with its state-of-the-art innovations and energy-efficient solutions. Currently 70% of its product offering is energy efficient.

Social and environmental responsibility has been at the forefront of Havells operating philosophy and as a result the company consistently contributes to socially responsible activities. For instance, the company is providing mid-day meal in government schools in Alwar district, covering more than 50000 students per day. The group company, QRG Healthcare runs a 140 bed hospital in Faridabad and will soon launch another 400 bed hospital in Faridabad by end of the year. In the past, the company has generously contributed to the society during various national calamities like the Bihar Flood, Tsunami and Kargil National Relief Fund etc.

The essence of Havells' success lies in the expertise of its fine team of professionals, strong relationships with associates and the ability to adapt quickly and efficiently, coupled with the vision to always think ahead.

Some of the 'Firsts' from Havells:

- Sets up India's First New Generation CMH Lamp Plant at Neemrana in the year 2010
- Launched India's 1st HPPF CFL in the year 2009
- Havells launched India's 1st BEE 5\* Rated Fan in the year 2009
- First Indian CFL manufacturers to have adopted RoHS, European norms on Restriction of Hazardous Substances in CFLs in the year 2008
- First Company to get the ISI Certification for complete range of CFLs in the year 2006
- Awarded the KEMA certification by The Dutch Council for Accreditation, making QRG the only group to attain this certification in the year 2005



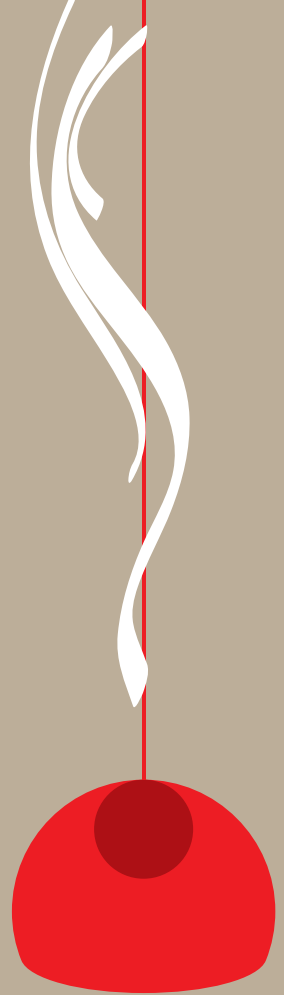


**QRG** TOWERS

# Coral

## Features

- Sleek design & soft operation of switches
- Available in pure white colour
- Glossy finish
- Complete Mega Range







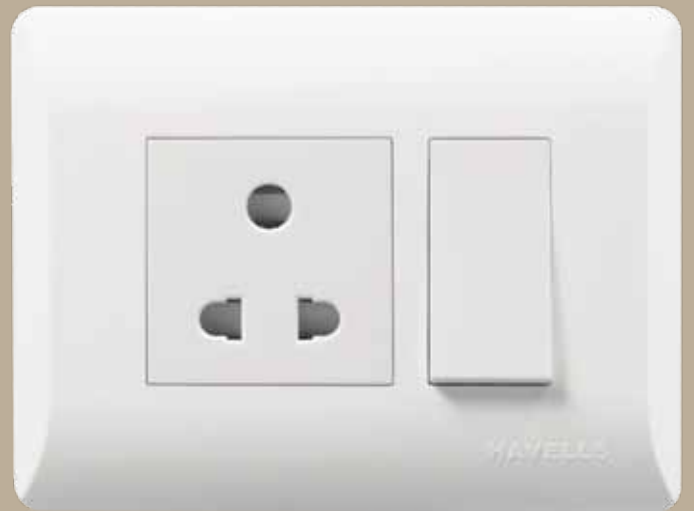
# Coral

## Long-lasting modular switches

Coral a perfect build of interior designer simplicity & durability. It sets new standard of convenience and comfort and that is the most affordable way. It suits every pocket and gives more value for money. Its Havells design and superior technology and affordability make it the most preferred choice



1M cover plate with one way indicator switch



3 M cover plate with 6A 3 pin socket & one way switch



4M cover plate with universal socket & one way switches



## Switches



Item Name	SAP Code
10Ax / 6Ax 1way Switch	AHCSXXW101/061
10Ax / 6Ax 2way Switch	AHCSXXW102/062
10Ax / 6Ax Bell Push Switch	AHCSBXW100/060
10Ax / 6Ax 1way with Ind. Switch	AHCSXIW101/061
10Ax / 6Ax Bell Push with Ind. Switch	AHCSBIW100/060
16Ax 1way Switch	AHCSXXW161
16Ax 1way Switch with Ind.	AHCSXIW161
16Ax 2way Switch	AHCSXXW162
25Ax 1 Way Switch	AHCSXXW251
10Ax/6Ax Mega Bell Push Ind. Switch	AHLMXIW101/061
32A DP Switch with Ind.	AHCSDIW321

## Sockets



Item Name	SAP Code
6A 2 Pin Shuttered Socket	AHLKXW062
6A 3 Pin Shuttered Socket	AHLKPXW063
6A 5 Pin Shuttered Socket	AHLKPXW065
6-16A 3 Pin Shuttered Socket	AHLKCXW163
10/25A Shuttered Socket	AHLKCXW251
Universal Socket	AHLKUXW130

## Support Modules



Item Name	SAP Code
Dimmer 400W	AHLDEBW040
5 Step Fan Regulator High Speed	AHLRFHW005
Step Fan Regulator (1M)	AHLRFXW004
4 Step Energy Saving Fan Reg.	AHLRFEW004
Telephone Socket	AHLKHW000
TV Socket	AHLKTOW000
Blank Plate	AHLXPBW001
Indicator Lamp	AHLPIW060
USB Charger (1M)	AHLGGXW001
RJ-45 Jack Cat 6 (Krone) mounting	AHLKMW451
RJ-45 Jack with Cat 6	AHLKJWW451

## Support Modules



AHCSMXW201



AHCSMXW251



AHCSMXW321

Item Name	SAP Code
20A Motor Starter	AHCSMXW201
25A Motor Starter	AHCSMXW251
32A Motor Starter	AHCSMXW321

## Mini MCB

**New**



DHCNCSPA006



DHCNCSPA010



DHCNCSPA020

Item Name	SAP Code
6 A SP C MINI MCB Coral	DHCNCSPA006
10 A SP C MINI MCB Coral	DHCNCSPA010
16 A SP C MINI MCB Coral	DHCNCSPA016
20 A SP C MINI MCB Coral	DHCNCSPA020
25 A SP C MINI MCB Coral	DHCNCSPA025
32 A SP C MINI MCB Coral	DHCNCSPA032

## Power Unit



AHLO202504



AHLO252504



AHLO322504

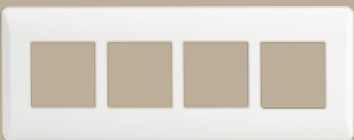
Item Name	SAP Code
20A Power Unit	AHLO202504
25A Power Unit	AHLO252504
32A Power Unit	AHLO322504

## LED Footlight



Item Name	SAP Code
4 Module LED Footlight	AHLPCFWL04

## Combined Plate - Coral



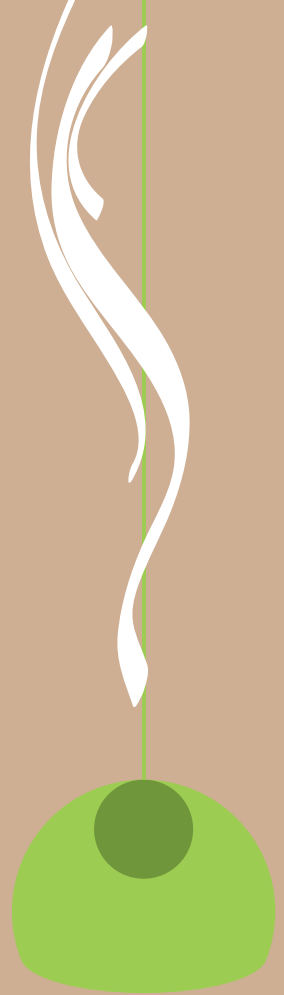
Item Name	SAP Code
1M Cover Plate	AHLPLCWV01
2M Cover Plate	AHLPLCWV02
3M Cover Plate	AHLPLCWV03
4M Cover Plate	AHLPLCWV04
6M Cover Plate	AHLPLCWV06
8M Cover Plate	AHLPLCWV08
8M Cover Plate (H)	AHLPLCWH08
9M Cover Plate	AHLPLCWV09
12 M Cover Plate	AHLPLCWV12
16M Cover Plate	AHLPLCWV16
18 M Cover Plate	AHLPLCWV18



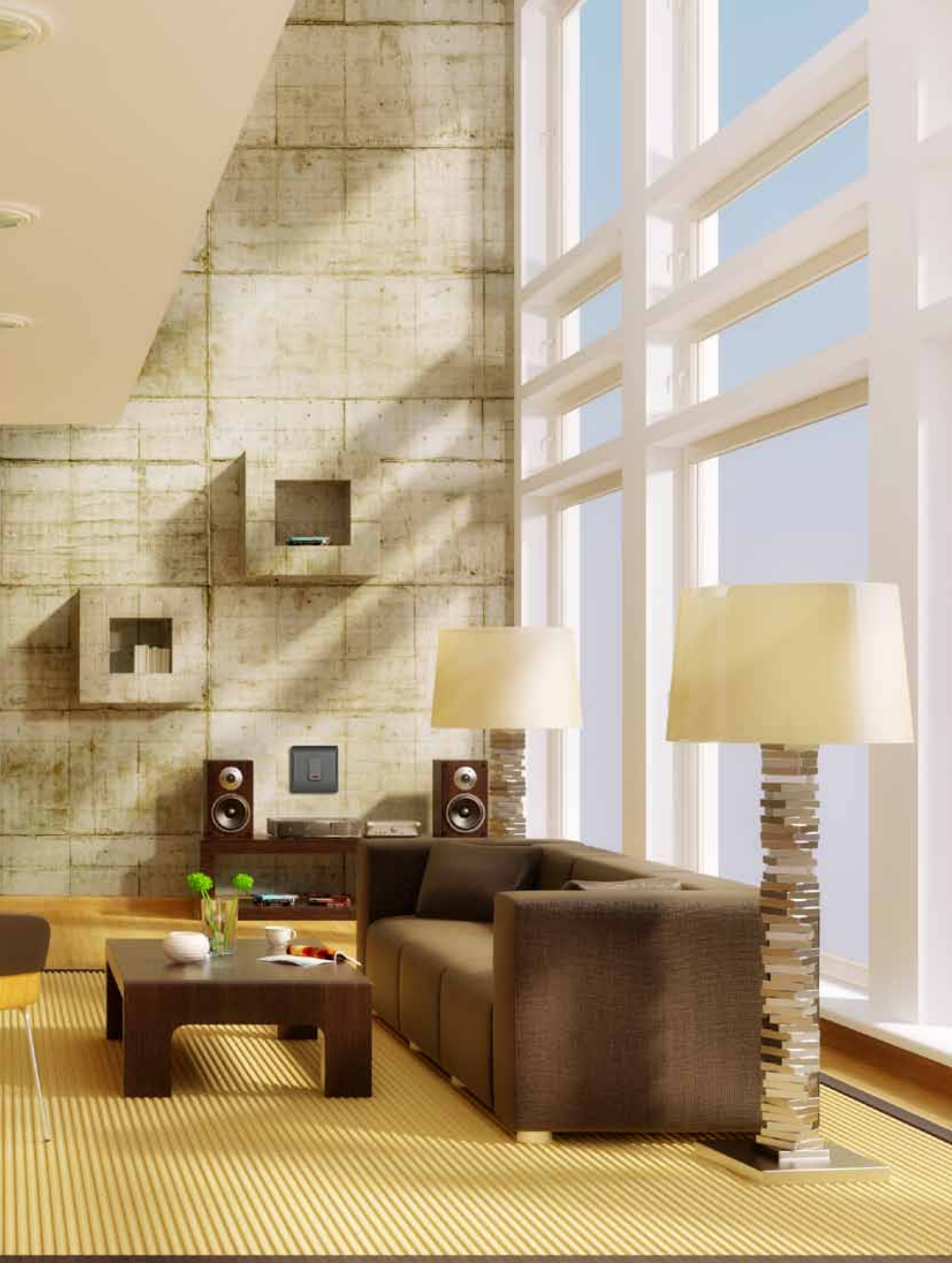
# Coral *Ebony*

## Features

- Sleek design & soft operation of switches
- Available in pure white colour
- Glossy finish
- Complete Mega Range







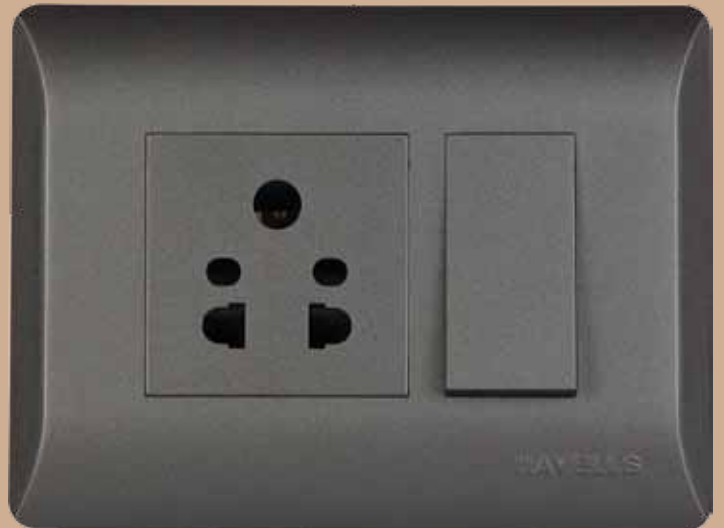
# *Coral Ebony*

## **Long-lasting modular switches**

Havells brings out a color range of switches called Coral Ebony. True to the word, our wisdom has guided us to develop this range in a way that enhances the beauty of the walls that it adorns, while allowing it to be dust free through anti-static finish and a design that minimizes the gap between the socket/switch and the plates.



1M cover plate with one way ind. switch



3M cover plate with universal socket & one way switch



4M cover plate with Universal Socket & one way switches



## Switches



## Sockets



## Support Modules



## LED Footlight



Item Name	SAP Code
10A 1Way With Ind. Switch	AHCSXIG101
10 A Bell Push switvh	AHCSBIG100
10A 1Way Switch	AHCSXXG101
10A 2Way Switch	AHCSXXG102
6A 2Way Switch	AHCSXXG062
16A 1Way Switch	AHCSXXG161
16A 1Way Switch With Ind.	AHCSXIG161
16A 2Way Switch	AHCSXXG162
25A 1Way Switch	AHCSXXG251
10A Mega Bell Push Ind. Switch	AHCMBIG101
32A DP With Ind. Switch	AHCSDIG321

Item Name	SAP Code
6A 2 Pin Shuttred Socket	AHLKPXG062
6A 3 Pin Shuttred Socket	AHLKPXG063
6A 5 Pin Shuttred Socket	AHLKPWG065
6-16A Shuttred Socket	AHLKXCXG133
25A Shuttred Socket	AHLKXCXG251
Universal Socket	AHLKUOG133

Item Name	SAP Code
Dimmer 400W	AHCDEXG042
High Speed Fan Regulator	AHLRFHG005
1M Fan Regulator	AHLRFXG004
Telephone Socket	AHLKPWG001
TV Socket	AHLKTOG001
Dummy Plate	AHLPLBGX01
Indicator Lamp	AHCIPIG061
RJ-45 Jack With Cat - 6	AHLKJWG451
RJ-45 Krone Jack With Mounting	AHLKMCG451
USB Charger 5V 1A	AHLGGXG001
20A Motor starter	AHCSMXB201
25A motor starter	AHCSMXB251
32A motor starter	AHCSMXB321
6 A SP C Mini MCB	DHCNCSPA00600EB
10 A SP C Mini MCB	DHCNCSPA01000EB
16 A SP C Mini MCB	DHCNCSPA01600EB
20 A SP C Mini MCB	DHCNCSPA02000EB
25 A SP C Mini MCB	DHCNCSPA02500EB
32 A SP C Mini MCB	DHCNCSPA03200EB

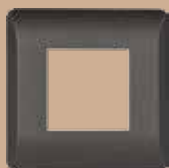
Item Name	SAP Code
4M LED Footlight	AHLPFCGL04

\*For more than 16 amp load contactor is required

## Combined Plates



AHLPLCGV01



AHLPLCGV02



AHLPLCGV03



AHLPLCGV06

## Combined Plates Silver



AHLPLCSV01



AHLPLCSV02



AHLPLCSV03



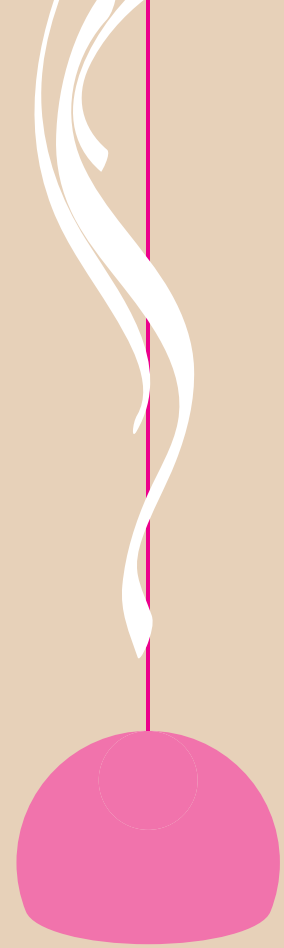
AHLPLCSV06

Note: The depicted color may vary slightly from the actual color due to uncontrollable variations in printing.

Item Name	SAP Code
1M Cover Plate	AHLPLCGV01
2M Cover Plate	AHLPLCGV02
3M Cover Plate	AHLPLCGV03
4M Cover Plate	AHLPLCGV04
6M Cover Plate	AHLPLCGV06
8M Cover Plate	AHLPLCGV08
8M Cover Plate (H)	AHLPLCGH08
9M Cover Plate	AHLPLCGV09
12 M Cover Plate	AHLPLCGV12
16M Cover Plate	AHLPLCGV16
18 M Cover Plate	AHLPLCGV18

Item Name	SAP Code
1M Cover Plate	AHLPLCSV01
2M Cover Plate	AHLPLCSV02
3M Cover Plate	AHLPLCSV03
4M Cover Plate	AHLPLCSV04
6M Cover Plate	AHLPLCSV06
8M Cover Plate	AHLPLCSV08
8M Cover Plate (H)	AHLPLCSH08
9M Cover Plate	AHLPLCSV09
12 M Cover Plate	AHLPLCSV12
16M Cover Plate	AHLPLCSV16
18 M Cover Plate	AHLPLCSV18





**Oro**

Features:

- Compact & Flushed Designed Plates
- Available in pure white colour
- Glossy finish
- Electrically excellent switches, sockets & fan regulators
- Captive Screws at the terminals







HAVELLS

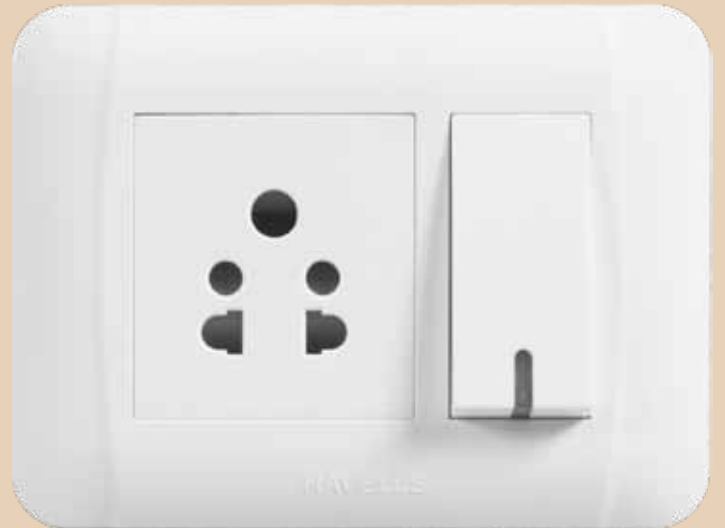


## a design that performs

Built with the perfect mix of a sense of design and rugged performance, ORO switches not only last longer but also fuel your imagination. The ORO range of switches are made from FR grade Poly Carbonate which makes these switches shock and dust proof and resistant to high impact and UV rays. They are based on crossed rib construction which provides extra strength and shuttered socket for complete child safety. ORO switches have captive screws, IP 20 Protection and their unique terminal contactor's design ensures maximum pin contact and are suitable for any type of plug. They conform to the highest quality standards and have a glossy white finish for a soothing effect.



1M cover plate with one way indicator switch



3M cover plate with 5 pin socket & one way indicator switch



4 M cover plate with 4 one way switches



## Switches



Item Name	SAP Code
6A /10A 1 way Switch	AHOSXXW061 / 101
6A /10A 2 way Switch	AHOSXXW062 / 102
6A /10A Bell push Switch	AHOSBXW060 / 100
6A/10A 1 way Switch with ind.	AHOSXIW061 / 101
6A /10A Bell push Switch with ind.	AHOSBIW060 / 100
16A 1way switch	AHOSXXW161
16A 1 way switch with ind.	AHOSXIW161
16A 2 way switch	AHOSXXW162
25A 1 way Switch	AHOSXXW251
10A 1way Bell Push with ind. (Mega)	AHOMBIW101
10A 2 way Switch (Mega)	AHOMXXW102
32A DP Switch with ind. (Mega)	AHOMDIW321

## Sockets



Item Name	SAP Code
6A 2 Pin Shuttered Socket	AHOKSXW062
6A 3 Pin Shuttered Socket	AHOKPXW063
6A 5 Pin Shuttered Socket	AHOKPXW065
6/16A 3 Pin Combined Shuttered Socket	AHOKPXW163
Universal Socket	AHOKUXW130
10/25A Shuttered Socket	AHOKCXW251

## Support Modules



Item Name	SAP Code
TV Socket	AHOKTOW061
RJ 11 Socket	AHOKROW111
RJ - 45 Jack with cat 6	AHOKJWW451
RJ-45 Jack Cat-6 (krone) w/mounting	AHOKMWW451
Telephone Socket 2G	AHOKROW112
Blank Plate	AHOPPBWX01
400W Dimmer	AHODEXW040
Step Fan Regulator (1M)	AHORFXW004
High Speed Fan Regulator	AHORFWW005
4 Step Energy Saving Fan Reg.	AHORFEW004
Indicator Lamp	AHOIXW061
20A Motor starter	AHOO202004
25A motor starter	AHOO252504
32A motor starter	AHOO323204
USB Charger (1M)	AHOGGXW001

## Mini MCB



Item Name	SAP Code
6A SP Mini MCB 'C' Series 3 kA	DHONCSPA006
10A SP Mini MCB 'C' Series 3 kA	DHONCSPA010
16A SP Mini MCB 'C' Series 3 kA	DHONCSPA016
20A SP Mini MCB 'C' Series 3 kA	DHONCSPA020
25A SP Mini MCB 'C' Series 3 kA	DHONCSPA025
32A SP Mini MCB 'C' Series 3 kA	DHONCSPA032

**Oro**  
Metallica

Features:

- Compact & Flushed Designed Plates
- Available in Metallic colour
- Glossy finish
- Electrically excellent switches, sockets & fan regulators
- Captive Screws at the terminals











Satin Gold



Magnesium Grey



Antique Copper



Silver Grey



Mustard Gold



Dusky Bronze

## Switches



AHOSXXG061



AHOSXXG062/102



AHOSBXG060/100



AHOSXIG061/101



AHOSBIG060/100



AHOSXXG161



AHOSXXG251



AHOSXIG161



AHOSXXG162

## Sockets



AHOKSXG062



AHOKPXG063



AHOKPXG065



AHOKPXG163



AHOKCXG251



AHOKUXG133

## Support Modules



AHODEXG040



AHORFHG005



AHORFXG004



AHOKROG111



AHOIXIG061



AHOPLBG001



AHOIXIG061



AHLKMCG451

## LED Footlight



Item Name	SAP Code
6A/10A 1Way Switch	AHOSXXG061/101
6A/10A 2Way Switch	AHOSXXG062/102
6A/10A Bell Push Switch	AHOSEBXG060/100
6A/10A 1Way With Ind. Switch	AHOSXIG061/101
6A/10A Bell Push With Ind. switch	AHOSBIG060/100
16A 1Way Switch	AHOSXXG161
16A 1Way Switch With Ind.	AHOSXIG161
16A 2Way Switch	AHOSXXG162
25A 1Way Switch	AHOSXXG251
10Ax Mega Bell Push ind.Switch	AHOMBIG101
32A DP Switch with ind Mega	AHOMDIG321

Item Name	SAP Code
6A 2 Pin Socket	AHOKSXG062
6A 3 Pin Socket	AHOKPXG063
6A 5 Pin Socket	AHOKPXG065
6-16A 3 Pin Combined Socket	AHOKPXG163
25A Socket	AHOKCXG251
Universal Socket	AHOKUXG133

Item Name	SAP Code
Dimmer 400 W	AHODEXG040
High Speed Fan Regulator	AHORFHG005
1M Fan Regulator	AHORFXG004
Telephone Socket	AHOKROG111
TV Socket	AHOKTOG061
Dummy Plate	AHOPLBG001
Indicator Lamp	AHOIXIG061
RJ-45 Jack With Krone Cat-6	AHLKMCG451
RJ-45 Jack With Cat-6	AHOKJWG451
USB Charger	AHOGGXG001

Item Name	SAP Code
4M LED Footlight	AHOPFCGL04

\*For more than 16 amp load contactor is required

### Combined Plate - Magnesium Grey



AHOPLCGV01

AHOPLCGV02

AHOPLCGV03



AHOPLCGV06

### Combined Plate - Satin Gold



AHOPLCEV01

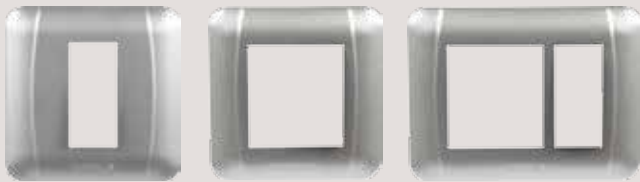
AHOPLCEV02

AHOPLCEV03



AHOPLCEH08

### Combined Plate - Silver Grey



AHOPLCHV01

AHOPLCHV02

AHOPLCHV03



AHOPLCHV06

Item Name	SAP Code
1M Cover Plate	AHOPLCGV01
2M Cover Plate	AHOPLCGV02
3M Cover Plate	AHOPLCGV03
4M Cover Plate	AHOPLCGV04
6M Cover Plate	AHOPLCGV06
8M Cover Plate	AHOPLCGV08
8M (H) Cover Plate	AHOPLCGH08
12 M Cover Plate	AHOPLCGV12
18 M Cover Plate	AHOPLCGV18

Item Name	SAP Code
1M Cover Plate	AHOPLCEV01
2M Cover Plate	AHOPLCEV02
3M Cover Plate	AHOPLCEV03
4M Cover Plate	AHOPLCEV04
6M Cover Plate	AHOPLCEV06
8M Cover Plate	AHOPLCEV08
8M (H) Cover Plate	AHOPLCEH08
12 M Cover Plate	AHOPLCEV12
18 M Cover Plate	AHOPLCEV18

Item Name	SAP Code
1M Cover Plate	AHOPLCHV01
2M Cover Plate	AHOPLCHV02
3M Cover Plate	AHOPLCHV03
4M Cover Plate	AHOPLCHV04
6M Cover Plate	AHOPLCHV06
8M Cover Plate	AHOPLCHV08
8M(H) Cover Plate	AHOPLCHH08
12M Cover Plate	AHOPLCHV12
18M Cover Plate	AHOPLCHV18



### Combined Plate - Dusky Bronze



AHOPLCKV01

AHOPLCKV02

AHOPLCKV03



AHOPLCKV06

Item Name	SAP Code
1M Cover Plate	AHOPLCKV01
2M Cover Plate	AHOPLCKV02
3M Cover Plate	AHOPLCKV03
4M Cover Plate	AHOPLCKV04
6M Cover Plate	AHOPLCKV06
8M Cover Plate	AHOPLCKV08
8M(H) Cover Plate	AHOPLCKH08
12M Cover Plate	AHOPLCKV12
18M Cover Plate	AHOPLCKV18

### Combined Plate - Mustard Gold



AHOPLCLV01

AHOPLCLV02

AHOPLCLV03



AHOPLCLV06

Item Name	SAP Code
1M Cover Plate	AHOPLCLV01
2M Cover Plate	AHOPLCLV02
3M Cover Plate	AHOPLCLV03
4M Cover Plate	AHOPLCLV04
6M Cover Plate	AHOPLCLV06
8M Cover Plate	AHOPLCLV08
8M(H) Cover Plate	AHOPLCLH08
12M Cover Plate	AHOPLCLV12
18M Cover Plate	AHOPLCLV18

### Combined Plate - Antique Copper



AHOPLCMV01

AHOPLCMV02

AHOPLCMV03



AHOPLCMV06

Item Name	SAP Code
1M Cover Plate	AHOPLCMV01
2M Cover Plate	AHOPLCMV02
3M Cover Plate	AHOPLCMV03
4M Cover Plate	AHOPLCMV04
6M Cover Plate	AHOPLCMV06
8M Cover Plate	AHOPLCMV08
8M(H) Cover Plate	AHOPLCMH08
12M Cover Plate	AHOPLCMV12
18M Cover Plate	AHOPLCMV18

Note: The depicted color may vary slightly from the actual color due to uncontrollable variations in printing.

## Hospitality Range



AHOSICW060



AHOSEIWO60

## LED Footlight



AHOPFCWL04

## Power Unit



AHOO002004



AHOO002504

## Combined Plate - Oro



AHOPPCWW01



AHOPPCWW02



AHOPPCWW03

Item Name	SAP Code
Do not Disturb & Clean My room	AHOSICW060
Electronic Key Card	AHOSEIWO60

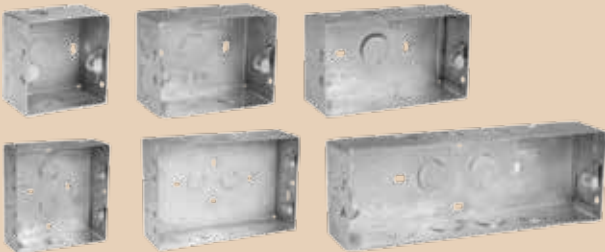
Item Name	SAP Code
4 Module LED Footlight	AHOPFCWL04

Item Name	SAP Code
20A Power Unit	AHOO002004
25A Power Unit	AHOO002504

Item Name	SAP Code
1M Cover Plate	AHOPPCWW01
2M Cover Plate	AHOPPCWW02
3M Cover Plate	AHOPPCWW03
4M Cover Plate	AHOPPCWW04
6M Cover Plate	AHOPPCWW06
8M Cover Plate (H)	AHOPPCWH08
8M Cover Plate	AHOPPCWW08
12M Cover Plate	AHOPPCWW12
18M Cover Plate	AHOPPCWW18

## BOXES FOR CORAL & ORO

### Flush Metal GI Boxes



### Surface Mounting Plastic Boxes



Item Name	Size (Inch)	SAP Code
1/2M Box	3X3	AHZXMIX01
3M Box	4X3	AHZXMIX03
4M Box	5X3	AHZXMIX04
6M Box	8X3	AHZXMIX06
8M Box	5X5	AHZXMIX08
8M Box (H)	9X3	AHZXMIIH08
8M Box (H) with 6 Clamp	9X3	AHZCMIIH08
12M Box	8X6	AHZXMIX12
18M Box	9X8	AHZXMIX18

Item Name	Size (Inch)	SAP Code
1/2 Module	3X3	AHNXMIZX01
3 Module	4X3	AHNXMIZX03
4 Module	5X3	AHNXMIZX04
6 Module	8X3	AHNXMIZX06
8 Module (Oro)	5X5 <sup>1/2</sup>	AHNXMIZX08
8 Module (Coral)	5X5	AHNXMIZV08
8 Module (H)	9X3	AHNXMIZH08
12 Module	8X6	AHNXMIZX12

## Manufacturing process



- In house facility with centralized PLC controlled material feeding system & de-humidifier
- Latest machines from L& T Demag
- On-line data recording of process control parameters
- Automated machine maintenance monitoring system
- Future plan for robotic systems



- Special Purpose Machines for 100 % online testing
- Chattering Test
- HV testing
- Contact Resistance Test
- Force to operate
- Load Test



- SPM Screw Tightening & Testing for Athena
- Continuity
- Screw Tightening at set torque
- Contact resistance
- Chattering (Zero Contact error)-Unique Feature
- High Voltage Current
- Force to operate Switch-Unique Feature



- Charmilles Switzerland-Best name in the world
- Auto programming on Wire Cut
- 100% safety through fume extraction system



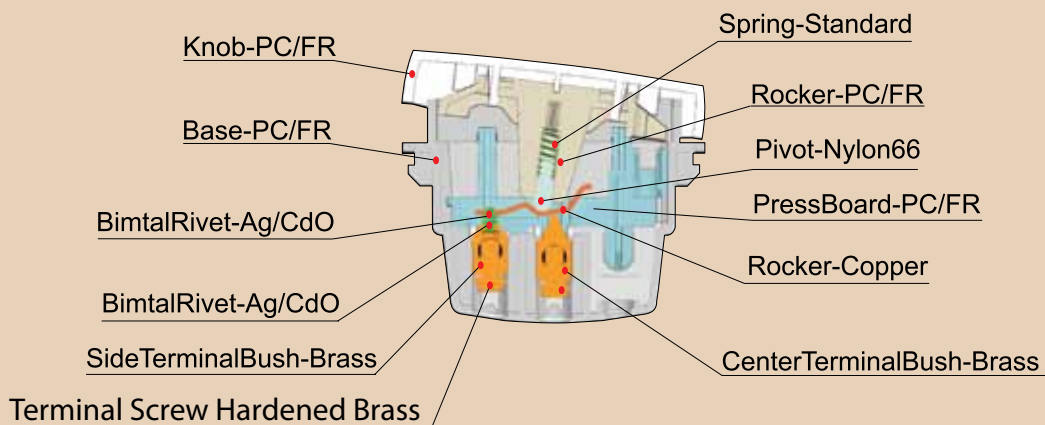
- Test Lab in Baddi is well equipped with all the latest equipments as per BIS requirement
- All Mechanical, Electrical & Visual parameters are being checked in Lab
- All type of Tests Like Routine, weekly, Quaterly & Yearly Tests are being performed as per STI (scheme of Testing & Inspection)

## Product Features:

What makes Irene switches the best is advance technology blended with excellence. switches, sockets and accessories are designed for the rugged Indian conditions. The range created from fire retardant, self extinguishing polycarbonate plastic, can withstand the glow wire test at 850°C. Also ultra-violet stabilized material is used to avoid discoloration even after long exposure to sunlight.

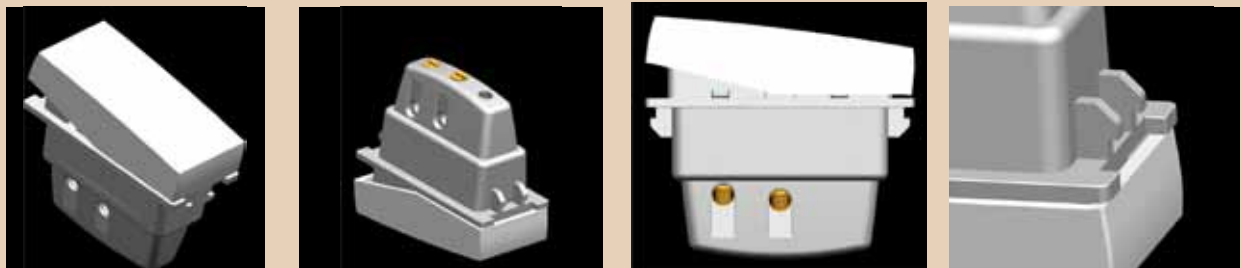
## Switch

- Fully conforms to IS-3854-1997
- Flame retardant, UV light stabilised, unbreakable engineering plastic housing
- Labyrinth effect to minimize visibility of arc
- Wide and concave switch knob for easy operation
- Silver cadmium oxide (AgCdo) contacts provide high conductivity and anti-weld properties
- Dome shaped moving contact and flat head fixed to provide positive contact
- GF nylon 66 plungers provide high mechanical strength and self-lubricating properties to enhance switch life
- Special steel springs to provide consistent contact pressure
- Hardened Brass rocker with silver inlay to reduce wear and tear of the fulcrum. Rocker profile provides lever effect to increase contact pressure and minimise temperature rise
- Silver plated brass terminals to provide high conductivity and reduce heating
- Liberal terminal hole size provided to accept wires upto 6 sq.mm



## Details of Interiors of a Switch

Oro switches, manufactured in accordance with IS 3854:1997 specifications have various in-built beneficial features. The integral design of terminals and contacts make the switch capable of withstanding high overload conditions. There is sufficient clearance between the moving contact and fixed contact to break the arc, during operation of the switch. The labyrinth design extinguishes arc faster and reduces arc visibility.



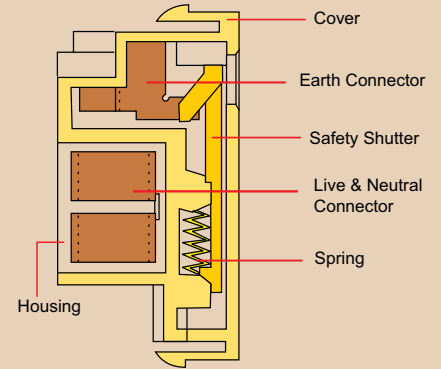
## Socket

- Fully conforms to IS-1293-1988
- Flame retardant, UV stabilized, unbreakable polycarbonate casing
- GF nylon 6 shutter (for mechanical strength and self-lubricating properties) provides safety
- Connector of Hardened brass to provide high conductivity, flexibility and contact pressure
- Silver plated (7 microns) brass terminals to reduce heating and improve conductivity



## Details of interiors of a Socket

Irene sockets come with phosphor bronze connectors for better connectivity and durability besides retaining its shape even after 10,000 operations (plugging in and out the 2/3 pin plugs). All sockets and plugs fully comply with IS 1293:1988 specifications.



## 5 Step Fan Regulators

- Highly efficient and energy conservative (no power loss)
- No radio interference
- Low noise levels
- Step control
- Modular construction (can be easily clipping on to modular plates without screws)
- Highly reliable (tested for 5000 electrical operating cycles)
- FR and UV stabilised housing
- Soft operation (low operating torque – 5.6 Nm)
- High insulation resistance 25000 mega ohms. Use of reputed make of components
- Rotation of the rotary switch is 360°, which enhance the life of product

## Tips to fit clips of Switch & Socket

Install the module into plates



Check if the lock fits the locking position properly



On this picture, the lock of module is not on the right position



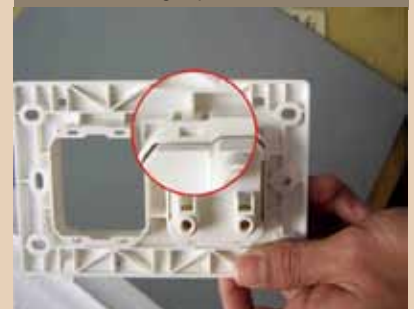
Now it is on the right position



You can use screw driver to push it, and bring the lock on right position



Now the lock is on the right position



## Warning:

- When the installation is finished, please check the lock of module whether they are into right position of the plates.
- If you find the module lock is not on the right position, please use finger tips to push it to the right position.
- If you think using finger tip is difficult, please use screw driver to push to the right position. When all the lock is at right position, the module will not come out when using plugs

Havells shall repair or replace products, at their discretion, if the products are found to be defective, solely as a result of faulty material and/or workmanship, within 10 years from the date of purchase, in the case of Electro-mechanical wiring device products. The guarantee for all mains related Electronic wiring products viz. dimmers, step fan regulators and indicator modules shall be for a period of two year from the date of purchase. For color range warranty is for 2 years against any color related issues. Warranty on Accessories is for 1 year.

Guarantee does not include Havells mounting boxes. The guarantee defines the Company's entire liability and does not cover consequential loss or damage, or reinstallation cost arising from defective product. The Company reserves the right to change/improve the design, without prior notice. In such cases, replacements shall be carried out, with design of the accessories prevailing at that point in time.

The guarantee for all products shall be rendered null & void:

- 1) If the product is altered, dismantled or rectified.
- 2) If the original Havells mounting boxes have not been used to mount the plates and accessories.

#### Terms & Conditions

- Prices are in Indian ₹.
- All prices are on Maximum Retail Price (MRP) basis inclusive of Excise Duty and VAT/Sales Tax. Freight / Delivery charges if paid by Havells shall be on behalf of customer only.
- Goods are despatched by us on Purchaser's risk. All claims for loss, damage or shortage will be filed by the Purchasers directly with the carriers.
- Disputes, if any are subject to Delhi jurisdiction only.
- This Price List supercedes all our previous Price Lists.
- Prices are subject to change without notice.
- Company reserves the right to issue amendments, which may arise due to any errors in the price list.



#### REGIONAL & BRANCH OFFICES:

**NORTH - REGIONAL OFFICE:** Corporate Office: QRG Towers, 2D, Sector-126, Expressway, Noida-201304, Tel: 0120-3331000, **Delhi:** Tel: 011-47676700, 23888200, **Chandigarh:** Tel: 0172-4232400-401, **Dehradun:** Tel: 0135-6670202, **Noida / Haryana:** Tel: 0120-3331000, **Ludhiana:** Tel: 0161-4676000 / 24, **Jammu:** Tel: 0191-2478330, 2479330, **Sri Nagar:** Tel: 0194-2490431, **Jaipur:** Tel: 0141-3914645, 3988210, **Jodhpur:** Tel: 0291-9214201640 / 45, **Lucknow:** Tel: 0522-6672100, **Kanpur:** Tel: 0512-6710400, 6710409

**EAST - REGIONAL OFFICE:** **Kolkata:** ICC Tower, 5th Floor, 4 India Exchange Place, Kolkata-700001, Tel: 033-40129851/ 52, **Bhubaneswar:** Tel: 0674-6668101/102/103/104, **Guwahati:** Tel: 0361-2134521, 2458923, 2460355, **Siliguri:** Tel: 0353-2525907, **Ranchi:** 0651-2244861, 2244862, 2244864, 2244868, 2244869, **Jamshedpur:** Tel: 0657-6542492, 09234369436, **Patna:** Tel: 0612-2207221, 2207222, 2207223, 2655518

**WEST - REGIONAL OFFICE:** **Mumbai:** 1271, Solitaire Corporate Park, Bldg. No. 12, 7th Floor, Andheri - Ghatkopar Link Road, Chakala, Andheri (East), Mumbai- 400093. Ph.: 022 - 67298600-602, **Ahmedabad:** Tel: 079-40061111, 40060738-740, **Indore:** Tel: 0731-2572340-41, 4009998 (Airtel), **Rajkot:** Tel: 0281-2481112, 2921212, **Nagpur:** Tel: 0712-2240932, 2242692, 2242699, **Pune:** Tel: 020-64016413 / 14, **Raipur:** Tel: 0771-4243400 / 01, **Surat:** Tel: 0261-2350137, 9979890137, **Jabalpur:** Tel: 0761-4064491

**SOUTH - REGIONAL OFFICE:** **Chennai:** Sigapi Achi Building, No. 18 / 3, 6th Floor, Rukmani Lakshmi pathy Road, Egmore, Chennai-600008, Tel: 044-42280600, 605, **Bangalore:** Tel: 080-49075000, **Coimbatore:** Tel: 0422-4550200, 2305199, 2306199, **Hyderabad:** Tel: 040-27533372, 27533355, 27533632, 66320407/0408/6401/6402, **Kochi:** Tel: 0484-4099000, **Vizag:** Tel: 0891-6514339, **Vijayawada:** Tel: +91-9247058847/57, **Calicut:** 0495-4019194, **Madurai:** 0452-4267022, **Trivandrum:** 0471-4015323, **Hubli:** 0836-4248600, **Trichy:** 09944460160

Representative Offices: • Goa • Solapur • Gwalior • Kathmandu • Bhopal

ZHAMC0002/May/2017



#### Havells India Ltd.

QRG Towers, 2D, Sector -126, Expressway, Noida - 201 304 (UP), Ph. +91-120-3331000,

E-mail: marketing@havells.com, www.havells.com

Consumer Care No.: 1800 11 0303, 1800 103 1313 (All Connections), 011-4166 0303 (Landline)

Join us on Facebook at www.facebook.com/havells and share your ways to save the planet!

CIN - L31900DL1983PLC016304.

