



HAVELLS

enviro
HARNESSING LIGHT. HARVESTING ENERGY.

HAVELLS ENVIRO

ALL-IN-ONE SOLAR STREET LIGHT

PERFORMANCE SERIES

USER MANUAL



* Panel cleaning is to be done twice a month.

* shown pictures are for reference purpose only

i) SAFETY CAUTION

1. Thank you for Purchasing Havells Enviro ALL-IN- ONE Solar Street Light.
2. Before you install and commissioning the Light, please carefully read the user manual.
3. The ALL-IN- ONE Solar Street light system is to be installed by an experienced technician in strict accordance as per the manual, to guarantee that it can work normally.
4. Please do not try to open products casing to repair by yourself.
5. Please do not put any load on the top of Street light or Box.
6. After receiving open the box carefully and check if any physical damage is there or not. In case of any issue please report to Havells Dealer.

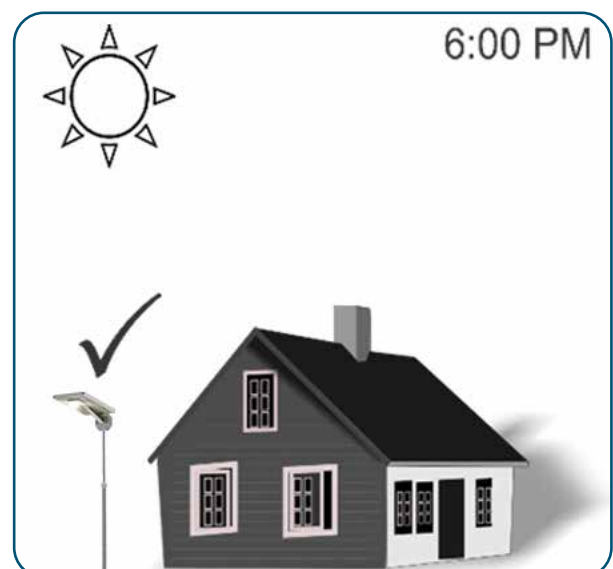
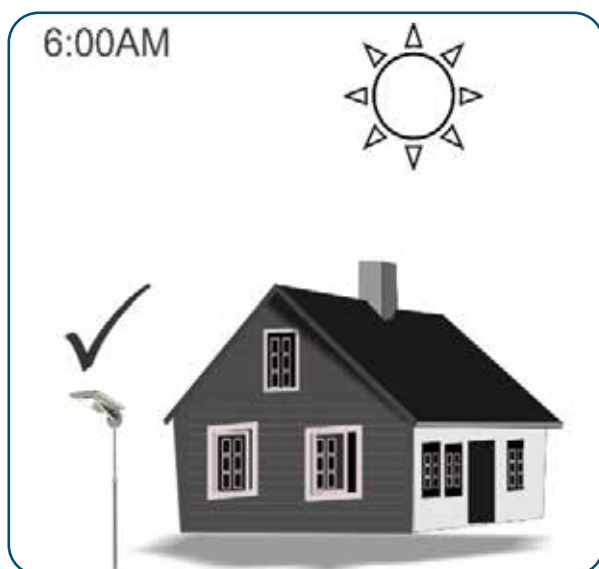
ii). ALL IN ONE SOLAR STREET LIGHT

ALL-IN-ONE Solar Street Light consist of components like Mono Crystalline Solar PV Module, LED Light Panel , MPPT Solar Charge Controller, Lithium Ferro Phosphate battery mounted on a single Extruded Aluminium Body. Solar PV Module generate DC Power through Sun Light available during day time. The DC Power is used to charge the battery. Stored power is use by LED panel in night time to Power the LED Light.

The ALL-IN-ONE Solar Street Light is designed to work with pre-defined backup and had dusk to dawn operation.

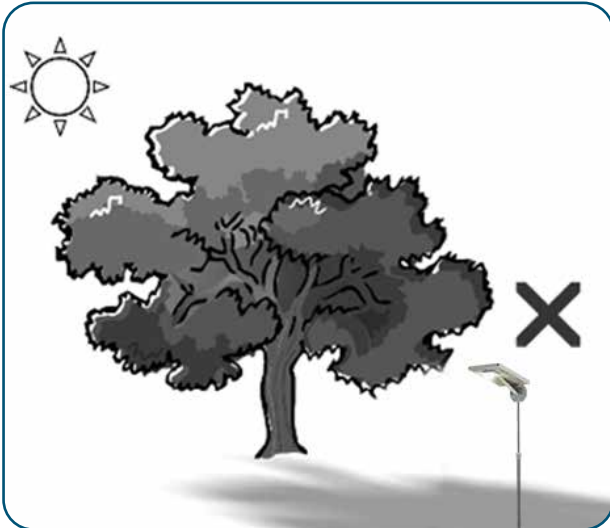
ALL-IN-ONE SSL is specially designed by Progressive Intelligent Dimming which automatically control the dimming and brightness of light, which increase the backup time.

a) Install AIO SSL south, if possible.



b) Install in a location that has good sun exposure throughout the year

c) Do not choose a sludgy or gravelly ground for installation. Do not perform the installation in light rain, morning dew or strong winds.



iii) PRE INSTALLATION PROCESS

1. ALL-IN-ONE SSL (AIO) could not work without Sunlight, please select the place where you get the maximum sunlight at solar panel and the light throw will be on the road.
2. ALL-IN-ONE SSL (AIO) comes with Lithium Ferro Phosphate battery for storing energy during the daytime with temperature range from 0°C to + 55°C. In case of temperature goes lower than 0°C the BMS will stop system automatically to protect the battery, and start when temperature goes higher than 0°C. For discharging at night the temperature range is -20°C to + 50°C, in which the system will perform and stop automatically if temperature goes out of range.
3. ALL-IN-ONE SSL (AIO) can be stored for 6 month after fully charged. In case storing the AIO for Longer period please charge it fully be placing under sunlight.
4. While Installation of AIO, please ensure solar panel towards direction of sun as possible and avoid house and shadow of obstacles such as tree at same time, otherwise it will reduce the generating efficiency of solar panel.
5. ALL-IN-ONE internal parts are with good waterproof design, all reach IP65 standard. Ventilation holes are specially designed for cooling and drainage.

iv) INSTALLATION PROCESS

1. After unpacking the box, please check if the AIO SSL received in good condition free from any damage.
2. The Pole Mount is fixed on the light in reverse direction. Use the Allen key provided along inside the box to open the 4 bolts and remove the Pole mount from light.

* Manufacturing tolerance applies as per relevant IS/IEC

* Specifications are subject to change without prior notice due to continuous up-gradation of technology.

3. After opening, place the pole mount as shown in Fig 1 and fix with help of pole mount.
4. The AIO SSL to be put on the pole height of 4-6 M from the ground level Depend upon the model you choose.
5. Fix the AIO SSL on Pole by using the C Clamp provided inside the box as shown in fig 2.
6. After Fixing of AIO SSL, please ON the light by using the SWITCH provided at back side of Light as shown in Fig 3.
7. After Switch ON, please wait for 1 minute to power ON the light.



Fig 1

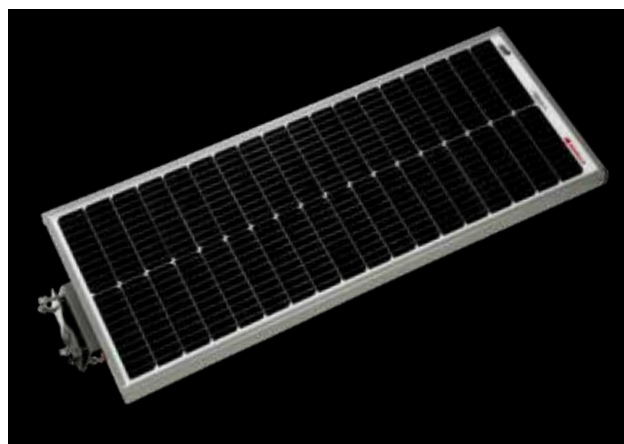


Fig 2



Fig 3

* shown pictures are for reference purpose only.

*Manufacturing tolerance applies as per relevant IS/IEC

*Specifications are subject to change without prior notice due to continuous up-gradation of technology.

SYMPTOMS	CAUSES	REMEDY
Light is not glowing after mounting	Operation switch is at OFF position	Make sure that light operating switch is at "ON" position
	Battery is not charged	Charge the battery by keeping the light under sunshine with switch at "OFF" position
	Sunlight falling on solar panel	This light is design to switch ON automatically only after sunset.
Not getting full night backup	Solar panel is receiving shadow of adjacent building/ tree during day time.	Light should be installed at a location free from shadows throughout day time.
	Light installed with solar panel facing North direction (light in South direction)	Light should be installed with solar panel facing clear south/East/West direction only
	Solar panel dirty (Solar panel covered with dust/birds dropping)	Clean the solar panel with a soft cotton cloth using water
	Cloudy or foggy condition during daytime	Solar street light requires clear sunshine for properly charging the battery during daytime. The problem should not come on clear days.

V. LED INDICATIONS

- i. Green LED Indicator: By glowing it indicates the charging of batteries, when it is actually being charged (True charge indication)
- ii. Red LED Indicator: By glowing it indicates the Low - Voltage of the batteries.

VI. DO'S and DON'TS

i. DO'S:

- a. Mount the AIO SSL where they will get maximum sunlight.
- b. Panel Cleaning is to done twice in 1 month.

ii. DON'TS:

- a. Don't mount the solar panels in the shade of a tree, building, or any other structure or you will limit the amount of sunlight on the panels, and thus limit the energy the solar panels can put into your battery.
- b. Do not use abrasive cleansers to clean the solar panel glass.

iii. MAINTENANCE:

- a. For maximum efficiency, clean the solar panel glass twice in month with water and any other glass cleaning product. Do not use abrasive cleansers to clean the solar panel glass. Scratches in the glass will negatively affect the solar panel performance.
- b. Store AIO SSL in Dry and clean place if you do not use them for a month or more.





WARRANTY CARD

Serial No.....

Name of Purchaser.....

Address.....

Date of Purchase.....

Dealer's Name.....

*** Warranty Terms & Conditions**

This product is covered with a warranty of Twenty four months from the date of purchase against a defect which has arisen, wholly or substantially as a result of faulty manufacture, parts or workmanship during warranty period.

Company warrants to the original purchaser provided the product is still in possession and used by original purchaser, from the date of shipment from the company

Consumer shall have no coverage or benefits under this warranty in the event of any of the following conditions are applicable.

- a) The product has been subjected to abnormal use or conditions, improper storage, exposure to excessive moisture or dampness, exposure to excessive temperature, unauthorized modification, unauthorized repair (including but not limited to the use of unauthorized spare parts in repairs), abuse, accident, act of God, spill of food or liquid, improper installation and breakage or damage.
- b) The consumer has not notified the defect of the product to the company during the warranty period.
- c) The product serial no. code or the accessory code has removed, defected or altered.
- d) The seals are broken or show evidence of tempering.
- e) All metal surface and all other externally exposed parts that are scratched or damaged due to abnormal customer use.

The warranty is offsite in nature, the consumer will have to take the product to the company authorized service Centres for repair and will have to take it back at his/her own expenses.

No other express warranty is applicable to this product. The duration of any implied warranties, including the implied warranty of marketability or fitness for particular purpose or use is limited to the duration of express warranty herein. The company shall not be liable for the loss of use of the product inconvenience, loss or any other consequent damage arising out of the use or inability of use, of the product of for the batch of any express or implied warranty of market ability or merchantability or fitness applicable to the product.

* Manufacturing tolerance applies as per relevant IS/IEC

* Manufacturing tolerance applies as per relevant IS/IEC

Specifications are subject to change without prior notice due to continuous up-gradation of technology. Specifications are subject to change without prior notice due to continuous up-gradation of technology.

REGIONAL & BRANCH OFFICES:

NORTH - REGIONAL OFFICE: Corporate Office: QRG Towers, 2D, Sector-126, Expressway, Noida-201304, Tel: 0120-3331000, **Delhi:** 011-47676700, 23888200, **Chandigarh:** 0172-4232400-401, **Dehradun:** 0135-6670202, **Haldwani:** 05946-222935/222933, **Noida / Haryana:** 0120-3331000, **Ludhiana:** 0161-4676000/24, **Amritsar:** 0183-5202400/401, **Jammu:** 0191-2478330, 2479330, **Sri Nagar:** 0194-2459248, **Jaipur:** 0141-4211000, 4211011, **Jodhpur:** 9214201640/41, **Lucknow:** 0522- 4921600/4921649, **Kanpur:** 0512-6710400

EAST - REGIONAL OFFICE: Kolkata: ICC Tower, 5th Floor, 4 India Exchange Place, Kolkata-700001, Tel: 033-40129851/52, **Bhubaneshwar:** 0674-6668101/102/103/104, **Guwahati:** 0361-2458923, 2134521, **Siliguri:** 0353-2525907, **Ranchi:** 0651-2244861, 2244862, 2244864, 2244868, 2244869, **Jamshedpur:** 0657-6542492, 09234369436, **Patna:** 0612-2207221, 2207222, 2207223, 2655518

WEST - REGIONAL OFFICE: Mumbai: 1271, Solitaire Corporate Park, Bldg. No. 12, 7th Floor, Andheri - Ghatkopar Link Road, Chakala, Andheri (East), Mumbai-400093. Tel: 022 - 67298600-602, **Ahmedabad:** 079-40061111, 40060738/740, **Indore:** 0731-4219444/4219422, 0731-2572340, **Rajkot:** 0281-2481112, 2921212, **Nagpur:** 0712-2240932, 2242692, 2242699 **Pune:** 020-26056175-76, **Raipur:** 0771-4243400/01, **Surat:** 0261-6131001, 9099056612, **Jabalpur:** 0761-4064491, **Bhopal:** 0755-4271544, 0755-4011025

SOUTH - REGIONAL OFFICE: Chennai: Sigapi Achi Building, No. 18 / 3, 6th Floor, Rukmani Lakshmi pathy Road, Egmore, Chennai-600008, Tel: 044-42280600, 605, **Bangalore:** 080-49075000, **Coimbatore:** 0422-4550200/282, **Hyderabad:** 040-27533372, 27533355, 27533632, **Cochin:** 0484-4099000, **Calicut:** 0495-4019193/4/5, **Trivandrum:** 0471-4015323, **Vizag:** 0891-6514339, **Vijayawada:** 0866-2546161/62/67/68/69, **Madurai:** 0452-4267000, Hubli: 0836-4248660, **Trichy:** 0431-4041005/06

Representative Offices: • Goa • Solapur • Gwalior • Kathmandu • Bhopal • Kolhapur • Vadodara



HAVELLS

Havells India Ltd.

QRG Towers, 2D, Sector -126, Expressway, Noida - 201 304 (UP), Ph. +91-120-3331000,
E-mail: marketing@havells.com, www.havells.com, Customer Care No. 08045 77 1313
Join us on Facebook at www.facebook.com/havells and share your ways to save the planet!

CIN - L31900DL1983PLC016304

Scan the QR Code
to download
Havells
Solar mCatalogue

